

Stage 3 Geography

Factors That Shape Places

Home Learning Module

Key inquiry questions

- 1) How do people and environments influence one another on the Cooks River?
- 2) How do people influence places along the Cooks River and the management of spaces within them?
- 3) How do people use the Cooks River, now and in the past?
- 4) How can we meet the future needs of catchment residents and river users?



Image: Cooks River mouth into Kamay Bay, Mascot; Photo by GREEC

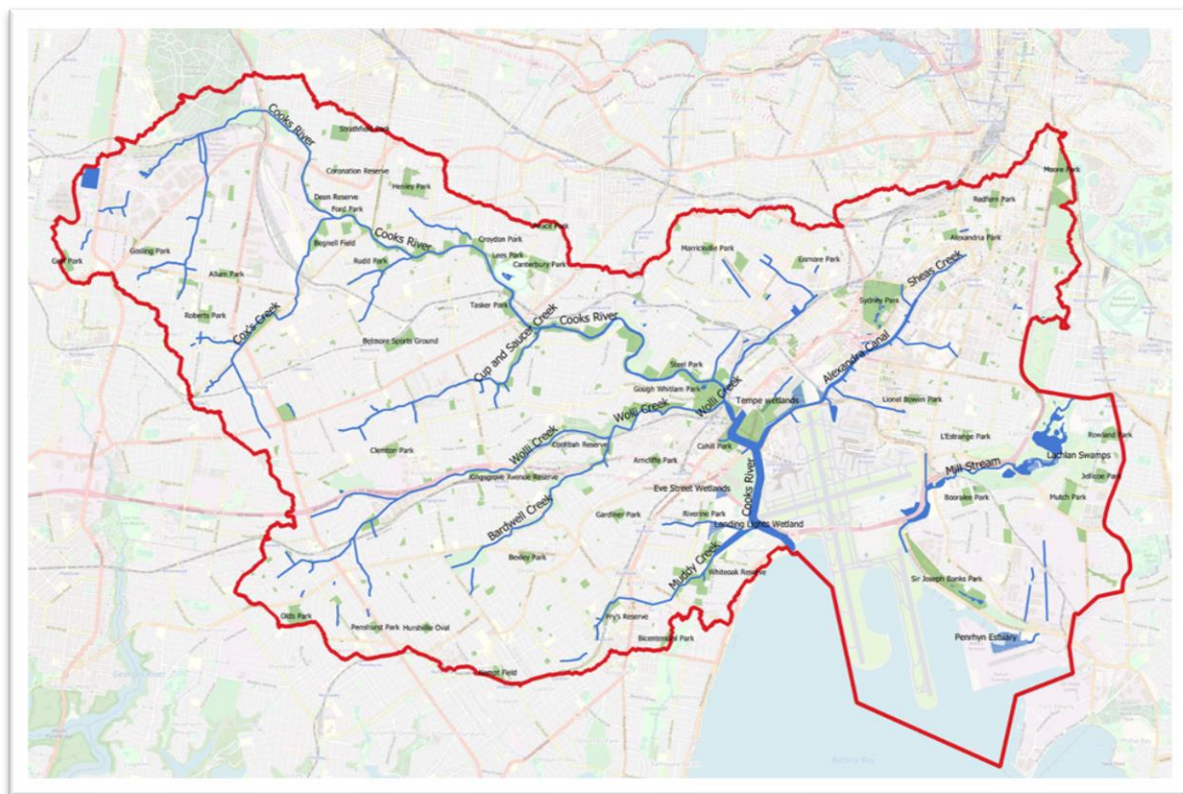
Content focus

Students investigate how people have changed the natural environment along the Cooks River. Students examine ways people influence the characteristics of places, including the management of spaces on the Cooks River.

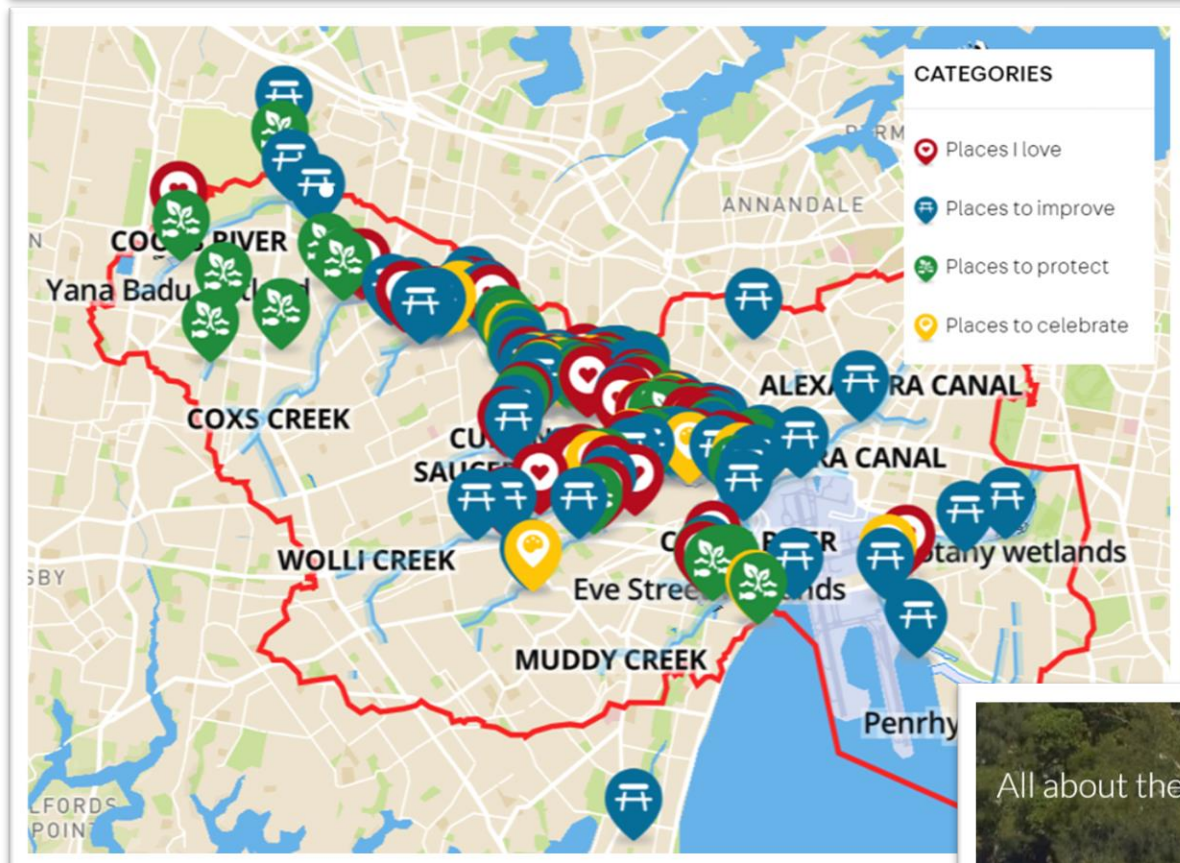
NAME: _____

Locating place and features

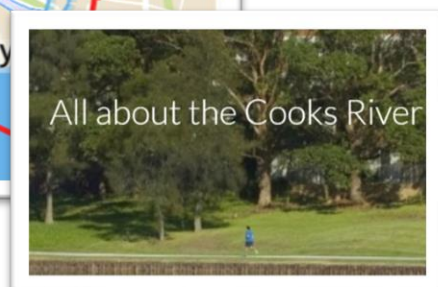
Task 1. Observe the two maps below and start your KWL chart for the Cooks River (found on page 6)



Waterways within the Cooks River catchment and Botany area.



Places in the Cooks River catchment that the community has labelled as special.



If you would like to know more, click [here](#) to be taken to a Google site created for the Cooks.

Fill in the columns as you work through the learning - **KWL Chart**

What I Know As you start, write what you think you know about the Cooks River.	What I Wonder At the beginning and during your learning, record questions you have about the Cooks River.	What I Learned After you have finished your research, write what you learned about the Cooks River.
1)	1)	1)
2)	2)	2)
3)	3)	3)
4)	4)	4)

Task 2. Consider the SWOT analysis table and **complete** the Strengths, Weaknesses, Opportunities and Threats sections in the table below.

What makes the environment along the Cooks River unique?	
Strengths <ul style="list-style-type: none"> What features of the environment make the Cooks River great place to visit? What unique features does it have? What do others see as its strengths? <i>E.g., you can see wildlife on the river banks</i>	Weaknesses <ul style="list-style-type: none"> What makes it less pleasant for you? What problems does it have? What do others see as it's problems? <i>E.g., my local park has a lot of weeds around it</i>
Opportunities <ul style="list-style-type: none"> What opportunities does it have that could make it more enjoyable? What positive improvements could be taken advantage of? <i>E.g., by removing more of the concrete river banks we could make more habitat for native animals.</i>	Threats <ul style="list-style-type: none"> What threats could harm the environment and make it less enjoyable? What problems have you seen when you visit the Cooks River? <i>E.g., the dog owners don't clean up after their pets</i>

What makes the environment along the Cooks River unique SWOT?

Strengths <ul style="list-style-type: none"> • 	Weaknesses <ul style="list-style-type: none"> •
Opportunities <ul style="list-style-type: none"> • 	Threats <ul style="list-style-type: none"> •

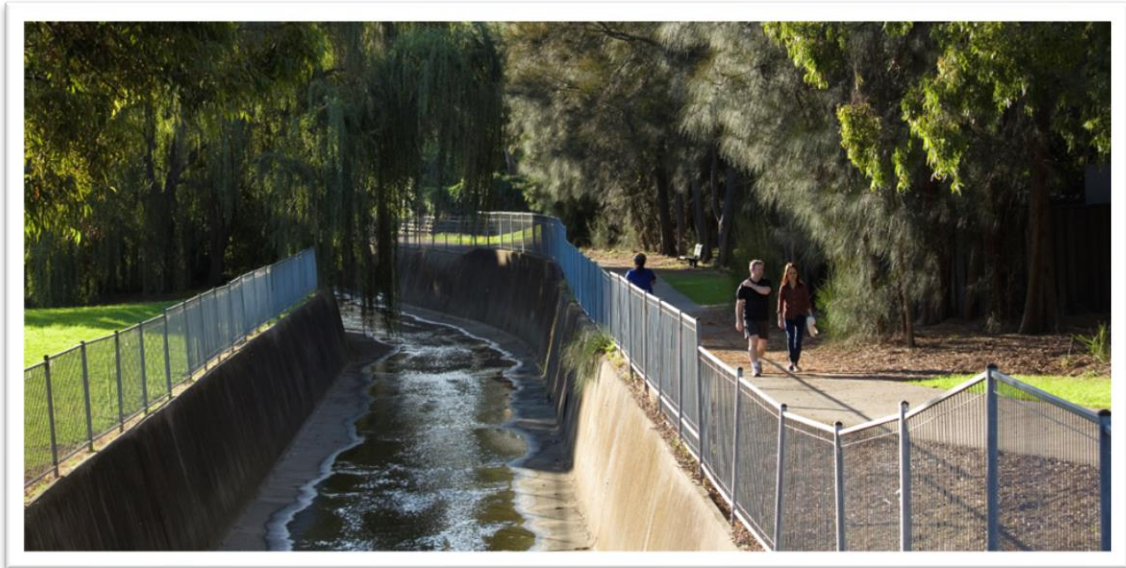


Image: Yanu Badu, Chullora Wetlands; Photo by Cooks River Alliance

Task 3. Aboriginal history of the Cooks River. Read the linked document and add to your KWL chart.

History has seen many changes to the Cooks River. The Aboriginal people living along the river were greatly impacted. **Click on the following link** to help you to learn more about the changes Aboriginal people have witnessed

https://cooksriver.org.au/wp-content/uploads/2017/06/Cooks_River_Aboriginal_history_WEB.pdf

There is a lot of information in this recount of 'Aboriginal History along the Cooks River'. For this activity you need to **read the timeline of change that is found at the bottom of each page, starting page 7.**



Image: Cooks River, Earlwood Lang Rd Bridge; Photo by Helen White Photography

Task 4. Create your own map of important locations (Places I enjoy, Services and facilities, Environmental quality & Cultural features)

To help communicate your learning and understanding of the way people enjoy and use the Cooks River you will prepare a map to show locations, destinations, and significant features around your favourite area of the river.

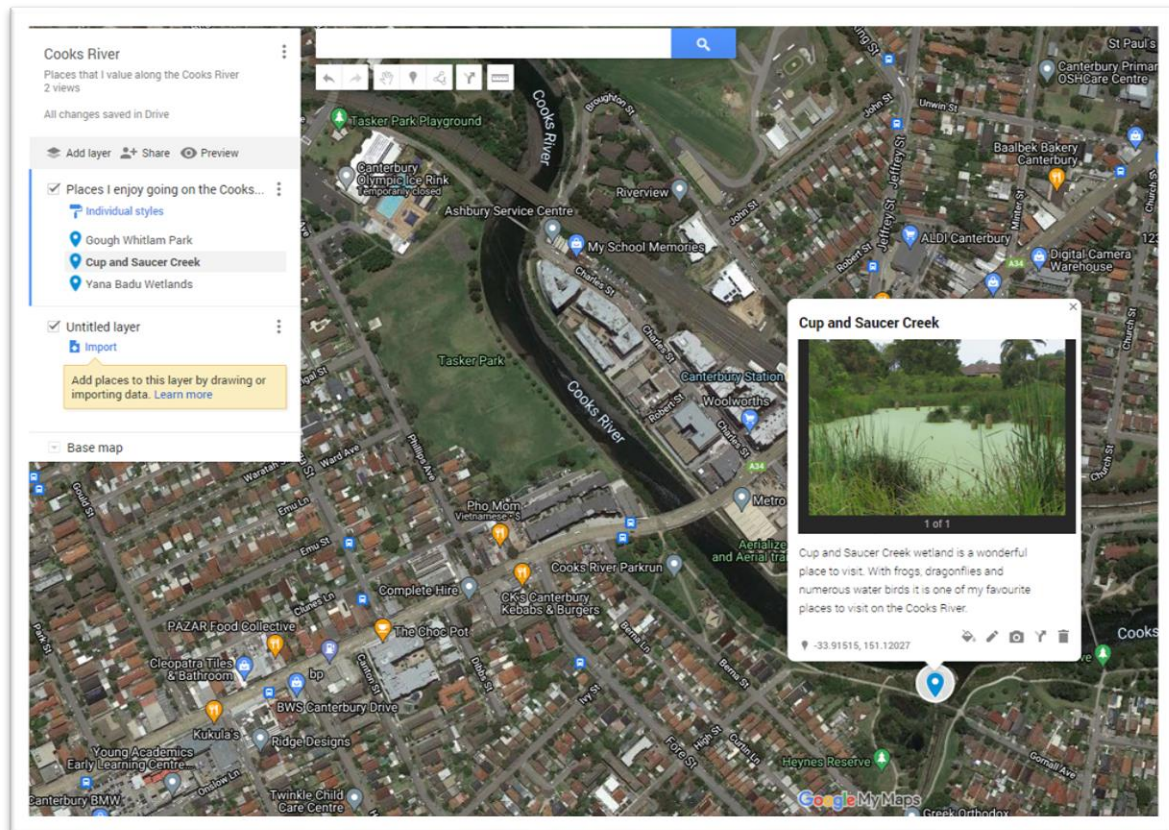




Image: Google map example of Cup and Saucer Creek site used by Georges River EEC

Create an individual map of your special places on the Cooks River using Google My Maps.

Instructions for map creation:

1. On your computer, sign in to [My Maps](#). (click on My Maps to be taken to the sign in page)
2. Click Create a new map.
3. Go to the top left and click "Untitled map."
4. Give your map a name and description.
5. To show your special locations and features click Add marker .
6. Select a layer and click where to put the place. A layer can have photos, 2,000 lines, shapes, or places.
7. Give your place a name.
8. Click Save.
9. Once you have created your map click Share  and Enable link sharing. Copy the link and paste it in Task 3 of the work sample section on page 6.

Paste the link to your Google map in the box

Link to My Cooks River map;

Task 5. Be part of the future improvement plan for the Cooks River and take the Survey by clicking on the link below **with an adult**.

Cooks River Community Values Survey – What Matters?

We are inviting everyone who lives, works, recreates, plays, or does business in the Cooks River Catchment to take the **survey**.

By doing the survey, you will help us understand what people value about the Cooks River and Botany Bay areas, their wetlands and smaller creeks and drains that flow into them. It will help us prioritise the Cooks River Catchment Coastal Management Program to provide appropriate works and services along the river and throughout the catchment. **You could also win \$100 voucher!***

**Parents/Guardians/Carers consent to the entry on behalf of minors (under 18 years) and individuals under their care.*

We acknowledge the traditional custodians of the Cooks River valley, the Wangal, Cadigal and Gameygal of the Eora nation. From Yagoona to Kamay Bay the 23 km river has experienced numerous changes throughout the past. With thought, respect and best practice this river will continue to improve into the future.

