

Cooks River Foreshores Working Group

Annual Report 2006/07 & 2007/08



COOKS RIVER
FORESHORES
Working Group



About this report

Acknowledgments:

This report was prepared by Judy Pincus with contributions and assistance from the following individuals:

Anumitra Chand	Jean Muspratt	Melissa Greenberg	Peter Stevens
Bronwyn Tuohy	Jim Walsh	Nell Graham	Phill Birtles
Colin Mable	John Dahlenburg	Paul Staples	Rebecca Whitehall
Daniel Cunningham	Kristy Gooding	Peter Lay	Robin Anderson
Geoff Swinney	Leigh Trevitt	Peter Munro	Ros Gibbons
Jan Orton			

COVER PHOTOS:

Cooks River Bank Restoration, Freshwater Park, Strathfield (Area A), three years after initial construction.
Taken by Jeanie Muspratt, Strathfield Council, January 2008.

Cooks River Bank Restoration, Gough Whitlam Park, Earlwood (Source: City of Canterbury)

This and all previous CRFWG Annual Reports are available on the 'Cooknet' website at <http://www.canterbury.nsw.gov.au/cooknet.htm>.

Abbreviations used:

BBCCI	Botany Bay Coastal Catchments Initiative
CMA	Catchment Management Authority
CREW	Cooks River Enviro Workers
CRVA	Cooks River Valley Association
CRFIP	Cooks River Foreshore Improvement Program
CRFSP	Cooks River Foreshores Strategic Plan (Clouston, 1997)
CRFWG	Cooks River Foreshores Working Group
DECC	NSW Department of Environment and Climate Change
DOP	NSW Department of Planning
DPI	NSW Department of Primary Industries
GRCCC	Georges River Combined Councils Committee
LGA	Local Government Area
MGP	Metropolitan Greenspace Program (NSW Department of Planning)
NRM	Natural Resource Management
RTA	NSW Roads and Traffic Authority
The River	The Cooks River
SMCMA	Sydney Metropolitan Catchment Management Authority
SSROC	Southern Sydney Regional Organisation of Councils
UNSW	University of New South Wales
WCPS	Wolli Creek Preservation Society
WSN	Waste Services NSW

Contents

Our Vision..... 3

About the CRFWG..... 4

Highlights..... 5

CRFWG Operations..... 7

Productive Partnerships..... 10

Regional Projects 14

Other Projects..... 26

Path Improvement Projects 41

CRFWG Members 44

PROJECT INDEX (with issues addressed and location)..... 46

Our vision

Our vision for the Cooks River

The Cooks River will be a vital and dynamic river system, representing, in all its dimensions, a healthy natural environment within its urban landscape.

The river and its foreshores will provide a rich recreational resource valued by both the local and wider community, catering for all interests from dog walkers to joggers, sports groups to picnickers and anglers to boat users; It will also be recognized as an important regional cycle link between Homebush Bay and Botany Bay.

As a generous river corridor, the foreshores will create an ideal opportunity to restore and conserve a range of native plant communities and wildlife habitats, establishing a link from the River's beginning in Bankstown to its issue into Botany Bay.

The river and its catchment will be managed to assist the natural recovery of the water quality, aquatic life and riverbed profile, enhanced by riverbanks that reflect a more natural character.

In all of its dimensions, the long Aboriginal and European history of the river will be recognised through informative, educational and artistic programmes and features along the river's length, bringing to the community that shares and enjoys its many attractions, a sense of pride in helping to secure a sound future for this valuable city landscape.

From the Cooks River Foreshores Strategic Plan (Clouston, 1997)



About the CRFWG

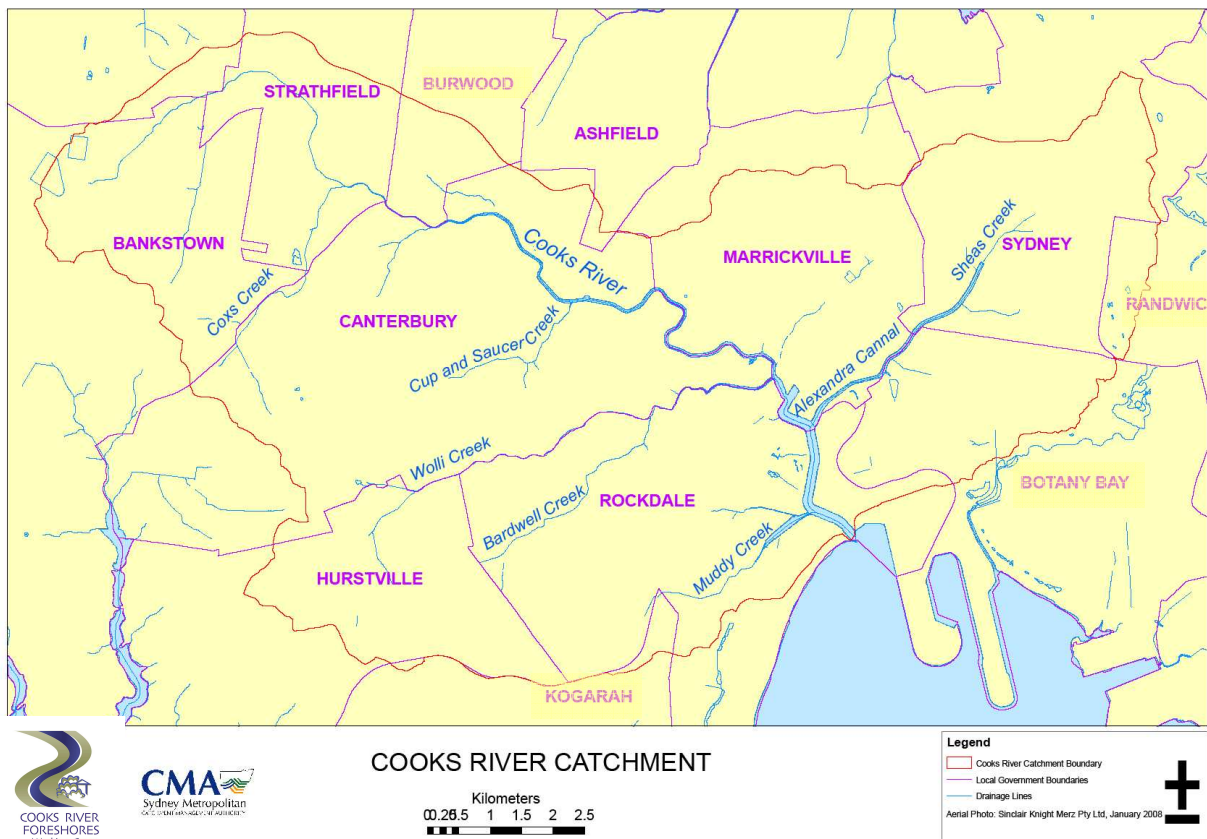
The Cooks River Foreshores Working Group (CRFWG) is a voluntary association of local councils and State Government agencies who are working together to improve the health and amenity of the Cooks River, its foreshores and catchment environment.

Guided by the vision, objectives and strategies of the **Cooks River Foreshores Strategic Plan (CRFSP)** (Clouston 1997), the CRFWG facilitates and promotes regional collaboration by key stakeholders to establish a more holistic and coordinated approach to the management of the River.

Through regional collaboration, the CRFWG seeks to ensure coordination of efforts, professional management, optimal use of resources and greater impact on governmental policies and decisions affecting the River than could be achieved through each partner working separately.

The CRFWG and the CRFSP aim to address the entire range of issues relevant to river and catchment management in order to realise the full potential of this valuable natural, recreational, cultural and educational resource for the benefit of the community and the environment. Issues addressed range from biodiversity, water quality and riverbank management, to access and recreation, community engagement and education, and the planning and administration needed to move from strategies on paper to actions on the ground.

The CRFWG today plays a pivotal role in driving Cooks River improvement. Its efforts and initiative have helped to attract significant council and State Government support and have added resources and momentum to the many local community initiatives flourishing around the catchment



Location Government Areas within the Cooks River Catchment with CRFWG member councils highlighted. Source: SMCMA

Highlights

Significant new projects & grants:

- ✓ The CRFWG's largest and most ambitious initiative to date, the **Cooks River Sustainability Initiative (CRSI)**, was launched in June 2007, following approval of a **\$2 million grant** from the NSW Government.

CRSI is a collaborative regional project bringing together eight (8) catchment councils to improve the health of the River and the catchment environment through:

- an innovative, locally focused, multi-disciplinary and participatory approach to urban water management in a number of sub-catchments within the Cooks River catchment; and
- engaging stakeholders to identify and establish new catchment governance arrangements that will facilitate sustainable catchment management for the Cooks River.

The CRSI vision will establish the Cooks River Catchment as a leading model of collaborative urban water management by showing how communities and councils, working together in varied and highly urbanised contexts, can improve the quality of their social and water environments.

- ✓ **13 council & community projects were awarded a total of \$749,196** in matching grants in the final round of the Cooks River Foreshores Improvement Program
- ✓ The City of Canterbury, Marrickville and Rockdale secured a **\$20,000 matching grant** (Estuary Management Program, DECC) **plus \$5,000** from project partner Sydney Water for the **Development of an Estuarine Vegetation Management Plan for the Cooks River**
- ✓ **Cooks River Bank Naturalisation Project** and Flood Study (Sydney Water)
- ✓ **Botany Bay Coastal Catchments Initiative** (SMCMA)

Regional strategies & plans completed:

- ✓ **Cooks River Pedestrian and Cycle Path Improvement Study:**
 - Pathway Development Strategy Completed, December 2006
 - Stage 5 Road Safety Audit Completed, December 2006
- ✓ **Cooks River Path Signage Strategy:**
 - Volume 1: Implementation Guidelines Completed, October 2007
 - Volume 2: Design Guidelines and Specifications (including map and sign artwork) Near completion
- ✓ **Cooks River Integrated Interpretation Strategy** Completed, January 2008

On-ground two-year results:

- ✓ Bank stabilization and local provenance riparian plantings have been completed along the full length (700m) of the Cooks River running through Freshwater Park, Strathfield, and along some 410m of riverbank at Gough Whitlam Park, Earlwood. At Gough Whitlam Park 3,050m² of new saltmarsh and 80m² of phragmites habitat have been created as well.
- ✓ 50.6 tonnes of litter and dumped materials and 43 sharps removed from the Cooks River & banks by the CREW project.
- ✓ 423 people participated in 57 Riverlife tours delivered by volunteer tour guides through the Riverlife Interpretive Tour Program.
- ✓ 3,144m of foreshore pedestrian and cycle path newly constructed or upgraded and/or path safety improvements undertaken by 4 councils at 7 locations.

Funding for CRFWG Operations:

Source	2005/06	2006/07	↑↓	2007/08	↑↓	2008/09 (committed)	↑↓
Councils	\$ 31,300	\$ 36,722	↑ 17%	\$ 46,140	↑ 26%	\$ 58,308	↑ 26%
State Government	\$ 35,000	\$ 35,000	⇒	\$ 28,000	↓ 20%	\$ 35,000	↑ 20%
Total	\$ 66,300	\$ 71,722	↑ 8%	\$ 74,140	↑ 3%	\$ 93,308	↑ 26%

Awards:

- ✓ **Riverlife Interpretive Tour Program** (Marrickville Councils and the City of Canterbury) - LGSA Environmental Education Award - Category Winner, December 2006
- ✓ **Dean Reserve Landfill to Landscape** (Strathfield Council) - NSW Minister for Planning's Sydney Greenspace Award, 2007 (Co-winner)
- ✓ **Freshwater Park Revegetation and Maintenance Project (Cooks River Restoration Project)** (Strathfield Council) - Keep Australia Beautiful NSW, Sustainable Cities Awards - Winner Biodiversity Conservation Award, August 2007

Research:

- ✓ **Second round of annual monitoring for the Riverscience Ecological Monitoring Program** Completed, December 2007
- ✓ **Riverscience findings interpreted for the community:**
 - Riverscience Interpretation Report Completed, September 2007
 - Cooks River Health Report Card 2007 Completed, April 2008
- ✓ **Marrickville Fauna Study** (Marrickville Council) Completed, February 2007
- ✓ **Survey of Community Knowledge & Attitudes towards Urban Biodiversity in the Cooks River Corridor** Completed, November 2006

Looking ahead:

During 2008/09 the CRFWG will be:

- Finalising the Cooks River Path Signage Strategy and installing new wayfinding signage based on that Strategy in all council areas along the foreshores;
- Promoting and seeking funding to implement recommendations from the Cooks River Integrated Interpretation Strategy;
- Continuing to improve pedestrian and cyclist access and safety by implementing recommendations from our Pathway Development Strategy;
- Progressing the Cooks River Sustainability Initiative;
- Continuing to remove rubbish from the River through our CREW project;
- Using Riverscience monitoring findings to inform management decisions;
- Developing vegetation management guidelines for the Cooks River estuary to improve management of salt marsh, mangroves and other aquatic and riparian vegetation;
- Upgrading the Cooknet website to provide better public and member access to up-to-date information about the Cooks River, the CRFWG and initiatives to improve the River;
- Streamlining and consolidating internal processes and project activities (reporting, communications, information management, etc) to keep up with the growth in activities and demands on our resources.

CRFWG operations

Funding for CRFWG Coordination

Total member council contributions towards coordination increased by 15%, from \$31,300 in 2005/06 to \$36,722 in 2006-07, and by another 25% in 2007/08, to \$46,140.

In-principle agreement was obtained from member councils to share CRFWG operating costs proportionally on a share-of-catchment basis. In line with this, Rockdale Council and the City of Canterbury have significantly increased their contributions over the past two years, to carry a fairer share of the costs. Bankstown has committed to increase its contribution in 2008/09 for the same reason.

The NSW Department of Planning continued to match council contributions in 2006/07, providing \$35,000 towards coordination through its CRFIP. The SMCMA then stepped in to assist by contributing \$28,000 in 2007/08, and committing \$30,000 for 2008/09. Sydney Water has also committed to provide its first financial contribution towards coordination in 2008/09.

Financial and in-kind contributions towards CRFWG coordination and operations are shown in the table below.

Financial and in-kind contributions for CRFWG coordination and operations

Contributor	Cash contribution			Cash commitment	In-kind contribution
	2005/06	2006/07	2007/08	2008/09	
Bankstown City Council	\$2,000	\$2,000	\$2,000	\$5,735	Staff time & meeting support
City of Canterbury	9,000	12,800	15,405	15,405	Staff time & meeting support
City of Sydney	2,000	5,422	6,500	6,500	Staff time & meeting support
Marrickville Council	10,000	6,000	7,735	7,668	Staff time & meeting support. Admin & management support for employment of Coordinator
Rockdale City Council	2,000	4,000	8,000	16,000	Staff time & meeting support
Strathfield Municipal Council	5,000	5,000	5,000	5,000	Staff time & meeting support. Hosting of Coordinator's position.
Ashfield Council	300	500	500	1,000	Staff time & meeting support
Hurstville Council	1,000	1,000	1,000	1,000	Staff Time
Dept of Planning	35,000	35,000	0	0	Staff time & meeting support
Sydney Metropolitan CMA	0	0	28,000	30,000	Staff time & meeting support
Sydney Water	0	0	0	5,000	Staff time & meeting support
RailCorp	0	0	0	0	Staff time & meeting support
Total	\$66,300	\$71,722	\$74,140	\$93,308	

Project Management

The CRFWG Coordinator managed four regional projects during the period covered by this report:

- Cooks River Enviro Workers (CREW)
- Development of a Cooks River Path Signage Strategy
- Development of a Cooks River Integrated Interpretation Strategy
- Cooks River Pedestrian and Cycle Path Improvement Project.

The City of Canterbury, Strathfield and Burwood Councils provided assistance with the financial administration of these projects.

Other regional projects were managed and administered by one of the project partners.

Strategic Planning

A review of CRFWG operations and activities was completed at the CRFWG Strategic Planning Workshop held with assistance from the Sydney Metropolitan CMA in December 2006. Strategies were identified for improving CRFWG processes, communications and effectiveness in order to keep up with the growing number and scope of projects and commitments by the Group.

Some of the outcomes are shown in the table below.

CRFWG Strategic Planning Workshop (December 2006) - Outcomes to Date

NEED IDENTIFIED	RECOMMENDED ACTION	OUTCOME
Promotion, communications	Develop a CRFWG Communications Strategy	Near completion
Information management	Develop an inventory (database) of CRFWG and Cooks River project documentation and resources	Completed. To be updated annually.
Processes	Elect a CRFWG Chairperson to help plan and chair meetings	Done
Funding	Secure three-year funding commitments from member councils	Three-year funding proposal developed and in-principle commitments secured
Funding	Secure ongoing State Government financial support	Secured short-term financial assistance from SMCMA (2007/08 and 2008/09) and Sydney Water (2008/09)
Strategy	Review the CRFSP and develop a new long-term (20-30yr) strategic plan for the Cooks River	Investigated the appropriateness of preparing an Estuary Management Plan for the Cooks River. Decided to revisit review of the CRFSP and the need for an Estuary Management Plan in mid- 2009, so that the findings and outcomes of the CRSI project can be drawn upon to inform the next generation of river, foreshores and catchment planning.

Staff and Administration

The CRFWG employs one full-time Coordinator to coordinate, facilitate and support its activities. The current Coordinator, Judy Pincus, has served the Group since 2000.

Ros Gibbons served as part-time Acting Coordinator from October 2007 – April 2008.

Marrickville Council continued to administer and provide managerial support for the employment of the CRFWG Coordinator during the year. Strathfield Council continued to host the position at its offices.

CRFWG operations

Meetings

During the two years covered by this report CRFWG meetings were held on a rotating basis at different member's offices as follows:

19 July 2006	Strathfield Council
19 September 2006 (councils only)	Strathfield Council
15 November 2006	Ashfield Council
13 December 2006 (strategic planning workshop)	Marrickville Council
7 February 2007	Sydney Water
2 May 2007 (councils only)	Strathfield Council
10 May 2007 (full group only)	City of Canterbury
8 August 2007	City of Sydney
15 November 2007	Ashfield Council
14 February 2008	Bankstown City Council
24 April 2008	Rockdale City Council
26 June 2008	Marrickville Council

Presentations given at CRFWG meetings to increase members' knowledge and awareness about the condition of the River and its management, included:

July 2006	'Sydney Water Stormwater Role and Challenges', Susan Farr, Manager Stormwater, Sydney Water
September 2006	'Patterns of Debris Movement in the Cooks River', Scott P. Wilson, Director, Centre for Environmental Restoration and Stewardship, Australian Catholic University. (Report on a study by an ACU Honours Student on the movement and distribution of litter in the Cooks River.)
May 2007	'Community Attitudes towards Urban Biodiversity along the Cooks River', Vasiliki Andrews and Linda Smith (UTS students)
May 2007	'The Future of the Riverlife Tour Program', Rebecca Whitehall, Project Officer
May & August 2007	'Do we need a Cooks River Estuary Management Plan?', Dave Miller, DECC Estuary Management Program
February 2008	'Opportunities to manage Wolli Creek Riparian Zone', Peter Stevens, Wolli Creek Preservation Society
April 2008	'Cooks River Integrated Interpretation Strategy', Cath Renwick, Consultant

Productive partnerships

CRFWG External Representation

The CRFWG Coordinator represented the CRFWG on numerous external committees and at a variety of meetings and events, including:

- SMCMA's Botany Bay Coastal Catchments Initiative Reference Committee;
- Sydney Water's Cooks River Bank Naturalisation Project Steering Group;
- Inaugural meeting of Mayors, Councillors, technical staff and community representatives to discuss the establishment of a regional Cooks River committee (May 2007) – presentation delivered about past and current CRFWG operations and activities;
- Greenacre Green and Golden Bell Frog Key Population Management Plan stakeholder workshop (2007);
- Sydney Water stakeholder consultation meeting at Marrickville Council regarding the proposed desalination plant water distribution pipeline route along the Cooks River (March 2007);
- Metropolitan Greenspace Program Local Government Workshop regarding opportunities for collaborative regional path development projects (May 2007);

Community

Over the past two years, the CRFWG and its members have worked to raise community awareness and encourage and support community involvement and initiative in efforts to improve the River/catchment environment, through:

- Partnering with local community groups (e.g., Wollie Creek Preservation Society, The Mudcrabs, etc) on a number of regional and member-led projects;
- Providing financial and in-kind support for community initiatives (eg, Two Valley Trail, The Mudcrabs Cooks River Eco-volunteers, numerous bush regeneration projects, etc.)
- Making information and reports publicly available via the Cooknet website
- Interacting with and providing information about the CRFWG and its major initiatives to the community via a CRFWG display / stall at the Cooks River Festival, April 2007;
- Providing opportunities for community members to have meaningful input into the preparation of the Cooks River Interpretation Strategy through creative workshops and meetings with the project consultants, including community consultation at the 2007 Cooks River Festival CRFWG stall;
- Having CRFWG representation at events organised by key community groups, e.g., the Cooks River Community Forum held by the Cooks River Valley Association, Riverworks Cooks River Environmental Sculpture Competition, Two Valley Trail launch, etc;
- Meeting with representatives of key community groups at CRFWG meetings (CRVA, the Mudcrabs, WCPS);
- Assisting the Georges Riverkeeper to plan and run an interfaith environmental education and clean-up event on the Cooks River involving some 300 students from a Catholic School in Bankstown and an Islamic School in Lakemba (20 November 2006). This wonderful good news story earned the Cooks River a notable mention in the Asia-Pacific edition of Time Magazine!
- Providing information to community groups, residents, students and media in response to specific requests;
- Maintaining ongoing liaison with local community groups.



A Mudcrab saving the world.
(Source:Peter Munro)

Productive partnerships

Sydney Metropolitan Catchment Management Authority

The CRFWG continues to enjoy a strong, cooperative and productive partnership with the Sydney Metropolitan CMA. Notable SMCMA support over the past two years has included:

- Assisting with implementation of the three SMCMA-funded Cooks River 'Catchment Icon Projects': Freshwater Park Revegetation & Maintenance Project, Turella Weir Fishway construction and Improving Biodiversity in Streetscapes;
- Sponsoring a professionally facilitated CRFWG Strategic Planning Workshop (December 2006);
- Holding a workshop (December 2006) with CRFWG member councils to identify priority riparian and riverbank restoration projects in the Cooks River catchment for inclusion in SMCMA's Waterways Health Strategy, leading to funding for the Turella Reserve Corridor Enhancement project under the GreenWeb Sydney Corridor Improvement Program;
- Preparing (jointly) and publishing the *Cooks River Community Update* brochure (February 2007);
- Running a bus tour of community and council bushcare / revegetation sites in the lower Cooks River Catchment for members of the community (September 2006);
- Including CRFWG representation on the Botany Bay Coastal Catchments Initiative Reference Group;
- Supervising UTS students undertaking a survey of residents and foreshore visitors to assess community attitudes towards revegetation along the Cooks River foreshores;
- Participating actively in CRFWG meetings and regional project steering committees;
- Contributing \$28,000 towards coordination of the CRFWG in 2007/08 and committing \$30,000 for 2008/09;
- Making a public show of support for the CRFWG by having the Chairman of the SMCMA Board, Mr Bob Junor, officially present a cheque for SMCMA's 2007/08 contribution, to the CRFWG Coordinator at the 2007 Cooks River Festival;
- Providing valuable technical assistance and advice.

Sydney Water

Sydney Water has become an increasingly valuable and active partner in our efforts to improve the River.

Cooks River Bank Naturalisation Project

The exciting news from Sydney Water is that it has begun investigating the feasibility of removing some of the concrete and naturalising sections of the Cooks River channel under its jurisdiction!

Sydney Water has \$25 million to spend by 2011 on stormwater infrastructure renewals, including the treatment of defective concrete walls in the channelised section of the Cooks River. Built during the Depression in the 1930's and 40's, the concrete-lined channels, which should have a lifespan of some 100 years, are already deteriorating in many locations.

Rather than automatically replacing defective sections with more concrete, Sydney Water consulted the CRFWG in November 2006, early in its process of deciding how to address this problem, regarding our long-term vision for the Cooks River, including its channelised sections. Our members put forward the restorative vision of the ***Cooks River Foreshores Strategic Plan*** and enthusiastically encouraged Sydney Water to explore opportunities for naturalising the banks and otherwise enhancing the ecological values, aesthetic, educational and other values of the River, riverbanks and riparian corridor.

Since then, Sydney Water has continued to consult and work closely with the CRFWG to progress the project. The CRFWG Coordinator has been actively involved in the project steering committee and Sydney Water's project manager provides regular updates at CRFWG meetings and seeks advice on a range of issues, including how best to engage and communicate with both councils and community stakeholders through the various stages of the project.

Productive partnerships

Other support provided by Sydney Water over the past two years has included:

- Co-funding, with the City of Canterbury, the purchase of a floating boom, which was ingeniously installed by the Georges Riverkeeper so as to capture floating in-stream litter and redirect it into the 'Boat Harbour' (Canterbury) for easy removal by the CREW team.
- Contributing tools and supplies for use by the CREW team;
- Partnering with Rockdale, City of Canterbury and Marrickville Councils and providing financial support for a new project to develop an estuarine vegetation (mangroves, saltmarsh, etc) management plan for the tidal reaches of the River;
- Participating actively in CRFWG meetings and regional project steering committees;
- Committing \$5,000 towards CRFWG coordination in 2008/09;
- Providing valuable technical assistance and advice.

Georges River Combined Councils Committee, Georges Riverkeeper Program

- Providing ongoing technical and field support essential for the success of the CREW Project.

Georges Riverkeeper, Simon Annabel, with members of the Mudcrabs near 'Boat Harbour', Canterbury. The CREW floating litter boom is visible in the background. (Photo provided by Peter Munro)



Cooks River Regional Committee

Mayors and representatives from Botany, Burwood, City of Canterbury, City of Sydney, Marrickville and Strathfield Councils came together on 29 May 2007, to discuss a proposal to establish a Cooks River regional committee with councilor and community representation, to help drive further Cooks River improvement by supporting and building upon the efforts of the officer-level CRFWG.

Representatives from the Cooks River Valley Association and the Mudcrabs were also present to provide initial community input regarding options for community representation on the committee. The CRFWG Coordinator also attended and presented an overview on the CRFWG and regional project activities to date. Terms of Reference were drafted and all participants agreed to continue with quarterly meetings.

NSW Department of Planning (DOP)

- Provided almost \$750,000 in matching grants for council and community projects through its CRFIP
- Participated regularly in CRFWG meetings for the duration of the CRFIP;
- Prepared *Cooks River Foreshore Landscape and Access Guidelines* - Final Draft released August 2006;
- Prepared the *Cooks River Foreshores Open Space Plan* – completed 2006.

Cooks River Foreshore Improvement Program Grants

The Cooks River Foreshore Improvement Program was established by the NSW Government (Department of Planning) to support council and community efforts to enhance the natural environment and recreational opportunities along the Cooks River foreshore. The program was based on the vision and objectives of the *Cooks River Foreshores Strategic Plan* and the work of the CRFWG.

Productive partnerships

Over the life of the program, almost \$2 million in matching grants were awarded to 36 regional and local council and community projects, resulting in a total investment of well over \$4 million to rehabilitate riverbanks, restore riparian habitat for native fauna, improve access, enhance enjoyment and safety, and increase public awareness and appreciation of the values of the River.

In the fourth and final round of the CRFIP, 13 council and community projects were awarded a total of \$749,196 in matching funding. The grants, announced in December 2006, are listed in the table below and project details can be found in the Projects section of this report.

CRFIP Round 4 grants - announced December 2006

Project	Grant recipient	Grant amount
Campsie Bushland Bush Regeneration	City of Canterbury	\$7,500
Path Improvement: Brighton Avenue to Footbridge	City of Canterbury	\$45,000
Path Improvement: Lindsay Street Footbridge to Broughton Street	City of Canterbury	\$70,000
Riverworks: Cooks River Environmental Sculpture Competition	City of Canterbury & The Mudcrabs	\$59,470
Alexandra Canal Path Concept Design Study	Marrickville Council	\$15,000
Kendrick Park Foreshore Reconstruction, Stage 2	Marrickville Council	\$165,000
Mackey Park Path Upgrade	Marrickville Council	\$85,000
Cooks River Vegetation Regeneration	Marrickville Council	\$65,000
Tempe Reserve Picnic Grounds and Planting Master Plan	Marrickville Council	\$70,000
Cooks River Pathway Improvement Plan	Rockdale City Council	\$30,000
Kyeemagh Boat Ramp Reserve - new foreshore parkland	Rockdale City Council	\$68,250
Implementation of the Cooks River Signage Strategy in the Strathfield LGA, Stage 1	Strathfield Council	\$30,000
Wolli Creek Bush Regeneration (Harthill-Law and Bray Avenues, Earlwood) Stage 3	City of Canterbury & WCPS	\$38,976
TOTAL CRFIP Round 4 grants:		\$749,196

The following are collaborative regional projects initiated by the CRFWG or its member organisations during the past two years.

Unless otherwise stated, funding figures represent the cumulative amount (excluding GST) expended on and/or committed to the project to 30th June 2008. The figures provided are based on the best information available at the time of printing.



Cooks River Sustainability Initiative (CRSI)

June 2007 - (July 2010)

Project Description

The Cooks River Sustainability Initiative (CRSI) is the largest and most ambitious initiative by the CRFWG to date. The aim of the project is to manage Cooks River catchment issues within a sustainability framework to improve river health, conserve water resources and improve the sustainability performance of both councils and communities.

This will be achieved through:

- Applying a proven locally-based, multi-disciplinary, participatory approach to integrated, sustainable river management in six diverse sub-catchments, across eight Local Government Areas within the Cooks River catchment; and
- Engaging key catchment stakeholders to develop and establish new regional river / catchment governance arrangements.

The CRSI approach is based on the innovative award winning model for urban stormwater management developed by Marrickville Council and Monash University through Marrickville's award-winning Urban Stormwater Integrated Management (USWIM) Project.

Status

- A joint application for funding, prepared by the CRFWG Coordinator and member council representatives, was submitted to DECC in August 2006.
- \$2 million Urban Sustainability Program grant award announced in February 2007
- Detailed Business Plan submitted to DECC in May 2007, and approved in June 2007.

- Project Manager recruited in August 2007
- Project team recruited and commenced work in January 2008
- Steering, Executive Champions, Communications, Applied Research and Governance committees established and meeting regularly
- Presentations, meetings, and training held with partners and stakeholders to build strong relationships and capacity
- Community water surveys underway for subcatchment communities
- Physical, social and organisational profiling of sub-catchments and a governance review commenced
- Website, branding, and informational activities completed
- Regional Spatial Information Working Group initiated

Partners

- Marrickville Council (Project Management)
- Ashfield, Bankstown, City of Canterbury, City of Sydney, Hurstville, Rockdale and Strathfield Councils
- CRFWG
- A/Professor Rebekah Brown, Program Leader; National Urban Water Governance Program; School of Geography and Environmental Science, Monash University
- Other stakeholders, eg, community groups, residents, businesses, State agencies and other land managers in the sub-catchments

Funding

- DECC, Environmental Trust, Urban Sustainability Program: \$2 million (2007 – 2010)
- Ashfield, Bankstown, City of Canterbury, City of Sydney, Hurstville, Marrickville, Rockdale and Strathfield Councils: in-kind

Regional projects

Cooks River Enviro Workers (CREW)

2004 - continuing

Project Description

CREW is a collaborative regional project to remove litter and other gross pollutants from the Cooks River and its tributaries.

Modeled on the successful Georges River clean-up program run by the Georges Riverkeeper, CREW brings a team of trained volunteers from the Periodic Detention Program of the NSW Department of Corrective Services, to the River two days a week to remove rubbish from the waterway and foreshores. Participating councils provide tools and supplies for the workers and dispose of the rubbish collected. The Georges Riverkeeper and PDC officers train and supervise the volunteers. The CRFWG Coordinator manages the overall project.

The CRFWG gratefully acknowledges the generous support of the Georges River Combined Councils Committee in making available the resources of the Georges Riverkeeper to enable this program to operate.



Rubbish collected by CREW volunteers awaiting pick up by council staff (Photo: Judy Pincus)

Status

In 2006/07, the CREW project removed an estimated 16 tonnes of litter, over 4 tonnes of large dumped materials and debris and 13 syringes from the Cooks River and its foreshores. In 2007/08, the takings rose to an estimated 24.5 tonnes of rubbish and small debris, 6.1 tonnes of dumped materials and large debris and more than 30 syringes.

Over the four years since CREW began in July 2004, CREW volunteers have extracted an estimated 105 tonnes of rubbish and small debris and more than 16 tonnes of dumped materials and large debris from the River and foreshores.

Dumped materials retrieved ranged from car parts and engine blocks to building rubble, shopping and airport trolleys, wheelie bins, etc.

Clean-up work began in the concrete-lined section of the River owned and managed by Sydney Water from November 2006, following approval by Sydney Water of a Work Safety Plan prepared by the Georges Riverkeeper.

A floating litter boom purchased with financial assistance from Sydney Water and the City of Canterbury and installed by the Georges Riverkeeper in July 2007, has enabled the diversion of in-stream litter into the 'Boat Harbour' inlet, for easier collection by the PDC volunteers.

Partners

- CRFWG (Project management)
- City of Canterbury (financial administration)
- Bankstown, Marrickville, Rockdale and Strathfield Councils
- Georges Riverkeeper Program, GRCCC
- Periodic Detention Program, NSW Department of Corrective Services
- Sydney Water Corporation

Funding

- Periodic Detention Program, NSW Department of Corrective Services: in-kind
- Georges Riverkeeper Program, GRCCC: in-kind
- City of Canterbury, Bankstown, Marrickville, Rockdale and Strathfield Councils: \$3,500 (2006/07), \$3,410 (2007/08) plus in-kind
- Sydney Water Corporation: in-kind
- CRFWG: in-kind

Snapshot of CREW outcomes since July 2004

Type of rubbish removed	2004/05	2005/06	↑↓	2006/07	↑↓	2007/08	↑↓	Total since start (July 2004)
Litter & small debris (Tonnes)	44.1	20.2	↓54%	16	↓20%	24.5	↑53%	104.8
Large debris & dumped materials (Tonnes)	2.5*	3.7*	↑48%	4	↑7%	6.1	↑52%	16.3
Sharps (No.)	na	233	na	13	↓94%	30	↑57%	276
Volunteer hours	6,252	4,662	↓25%	3,420	↓27%	5,082	↑49%	19,416

* Not fully reported

Development of a Cooks River Estuarine Vegetation Management Plan

2007 - (July 2009)

Project Description

The intertidal zone has been neglected in the various planning documents and on-ground works undertaken for the Cooks River. This project aims to develop a management plan that will outline best practice management of estuarine vegetation (mangroves, saltmarsh, casuarina) and associated issues, eg, water and riverbank management, natural resource conservation, landscape character (sightlines, views), water access and interpretation and promotion. The plan will cover the Cooks River up to Burwood Road, Campsie, including Wolli Creek.

Status

A grant has been received under the Estuary Management Program (DECC), matching project partners' contributions, to produce an Estuarine Vegetation Management Plan (VMP) for the Cooks River. In 2008/09, a project brief will be developed and a consultant engaged to produce the VMP. The plan will consider the long-term management of saltmarsh, mangroves and casuarina along the Cooks River foreshores to ensure no net loss and, if possible, an increase in these habitats. The plan is expected to be completed in early 2009.

Partners

- City of Canterbury (Project management)
- Marrickville and Rockdale Councils
- Sydney Water
- CRFWG

Funding

- City of Canterbury: \$5,000 cash; \$10,000 in-kind
- Marrickville Council: \$5,000 cash; \$5,000 in-kind
- Rockdale Council: \$5,000 cash; \$5,000 in-kind
- Sydney Water: \$5,000
- DECC, Estuary Management Program: \$20,000 (2007/08)



Small patches of mixed saltmarsh/mangrove habitat occur in patches on the River (Source: Cooks River Ecological Monitoring Program Phase I Report)

Regional projects

RiverScience Cooks River Ecological Monitoring Program

2005 - continuing

Project Description

RiverScience is a scientific research program monitoring the ecological health of the Cooks River and its main tributaries. It uses a number of ecological indicators to measure the River's health, including the extent and composition of macroflora (eg, salt marsh, sea grass and mangroves) and aquatic invertebrates (eg, oysters, barnacles and crabs), as well as various sediment characteristics.

Monitoring these indicators over time, for example, the population of oysters at a specific sampling site, makes it possible to gauge changes in the ecological health of the River over time. As the River's health is directly affected by many land use and management practices that can be influenced by local government, Riverscience findings will help councils evaluate the impact of their management practices on the health of the River and give them information needed to make better management decisions.

Status

The second round of annual monitoring, completed in December 2007, found that although the River is still in poor health:

- Crab numbers are increasing
- Mangrove forests are extensive and in good condition
- Saltmarsh pockets are small but healthy
- Shorebirds were seen actively foraging at 10 of the 17 monitoring sites
- Sydney rock oysters and barnacles have increased at two sites and algal cover has increased at all sites. The algal cover is being grazed by gastropods (snails) and kept as a low turf.

A third round of monitoring will be undertaken in December 2008.

A river health Report Card and a public information report summarising and interpreting the results of this monitoring were created to assist in presenting findings to the community. These and full scientific reports can be

downloaded from Cooknet or <http://www.marrickville.nsw.gov.au/environment/cooksriver/riverscience.htm>.

A grant application was submitted to DECC (Estuary Management Program) to develop sediment monitoring protocols and undertake core sampling to obtain information about the presence and behaviour of heavy metals and pollutants in river sediment. This information will help guide future management decisions regarding treatment of the sediment.

Partners

- City of Canterbury, Kogarah (Stage One only), Marrickville and Rockdale Councils
- University of New South Wales
- Sydney Water
- Railcorp
- DPI – Fisheries
- DECC
- Wollie Creek Preservation Society

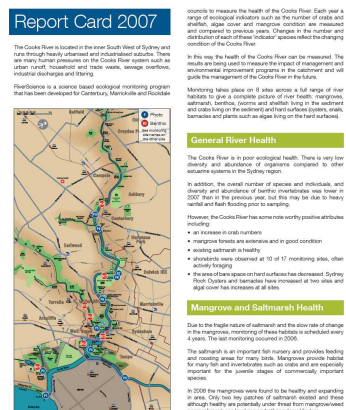
Funding

Program development (Stage 1)

- City of Canterbury, Kogarah, Marrickville and Rockdale Councils, UNSW, Sydney Water, NSW Department of Natural Resources, DPI - Fisheries: \$30,000 (cash and in-kind)
- DOP, CRFIP (Round 1): \$30,000
- Landcare Australia Ltd. and Australand/Landcom: \$15,000
- RailCorp: \$5,000
- Wollie Creek Preservation Society: \$500

2007 Monitoring (Stage 2)

- City of Canterbury (\$4,000), Marrickville (\$4,000) and Rockdale Councils (\$3,000)
- DECC: \$500



Planting the Seed

2005 - continuing

Project Description

Planting the Seed addresses the need to strategically manage local provenance indigenous plant resources to ensure there will be enough plant material available to meet the growing demand for local species in local and regional ecological restoration, revegetation and foreshore improvement projects.

Planting the Seed builds upon work begun under the Cooks River Seedbank and Remnant Restoration Project (1998 – 2003).

Status

A GIS database has been created identifying the location of and species in all existing remnant and native vegetation patches along the Cooks River foreshores in Canterbury, Rockdale and Marrickville LGAs. This is now being updated with the details of new plantings to enable us to document the exact locations and provenance of known seedlings. The grant-funded aspects of this project were completed in 2007.

The councils are committed to the ongoing maintenance and improvement of the database, and will be seeking further funding to continue this work.

Partners

- Marrickville Council (Project Management)
- City of Canterbury and Rockdale Councils
- Wolli Creek Preservation Society

- CRFWG
- SMCMA

Funding

- Councils: \$109,000 (cash and in-kind)
- DOP, CRFIP (Round 1): \$109,000



Native plantings on the foreshores in Canterbury LGA. (Photo: Judy Pincus, 2007)

Community Attitudes towards Urban Biodiversity along the Cooks River, Research Project

2006

Project Description

Sydney Metropolitan CMA and the University of Technology (UTS), Sydney, jointly supervised a three-month research project by UTS Urban Ecology students, Vasiliki Andrews and Linda Smith, on community knowledge and attitudes towards urban biodiversity within the Cooks River corridor.

This project explored the community's understanding of and attitudes towards:

- the natural value the area and the relationship between vegetation and a healthy, natural river;
- existing native plantings and revegetation sites and preferred plant species;
- local native wildlife;
- changing landscaping from open space areas (turf) to semi-closed areas (bushland);
- the River (affinity for, strength of feeling, sense of ownership).

Regional projects

Status

The findings from this study provide valuable insights for the councils and the SMCMA on community attitudes towards the use of native revegetation and landscaping along the Cooks River foreshores. The findings demonstrate widespread public support for revegetating the foreshores with native plants and suggest that the preference for native plants increases with



What the community said about revegetating the foreshores...

- 150 local residents participated in a door to door survey across 3 council areas and 103 participated in a park user survey.
- 87% of local residents surveyed thought that native plants should be planted beside the river.
- In Marrickville and Strathfield Council areas residents preferred to see vegetated riverbanks over grassed, 88% and 94% respectively, when shown photographs of the two scenarios. However, in Canterbury Council only 42% preferred the native vegetation. This figure improved to a 50% when asked 'which scenario was better for the environment'.
- Over 90% of park users preferred the semi-closed native vegetation scenarios over the open grassed scenarios.
- Over 70% of resident and park users indicated they would be pleased to see more types of native wildlife in the river corridor, except for Marrickville residents of whom only 58% wanted to see more wildlife.

Photo: Out for a stroll along the Cooks River foreshore path, Canterbury (Photo: Judy Pincus, 2007)

exposure and experience. The data collected will also be useful to land managers in designing future community consultations regarding environmental restoration works on the Cooks River.

A copy of the final report, 'A Community-Based Survey: Knowledge and Attitudes Towards Urban Biodiversity of the Residents and Users of the Cooks River Corridor', is available on the CookNet and UTS websites.

Partners

- University of Technology, Sydney
- SMCMA
- CRFWG

Funding

- UTS: in-kind
- SMCMA: in-kind

Cooks River Integrated Interpretation Strategy

2005 - 2008

Project Description

The CRFSP identified the need for coordinated interpretation and promotion of natural and cultural heritage along the River, to:

- Increase the public's awareness, education, enjoyment and participation in all aspects of the River's natural, cultural and social dimensions;
- Promote the River's values and the improvements to its qualities to the wider community; and
- Channel and encourage local community support in the most effective manner for the long-term benefit of the River.

This project entailed development of an integrated interpretation strategy for the Cooks River to guide the foreshore councils and other stakeholders in interpreting and promoting the natural and cultural values and contemporary environment of the Cooks River and its foreshore corridor.

Status

Extensive and generous community, council and specialist input during the preparation of the Strategy, has resulted in a document that is rich with creative ideas and full of valuable resources that will not only inform and support interpretive projects, but also will be of interest to students, teachers, researchers, consultants, artists and others interested in the Cooks River.

Regional projects

The CRFWG and the foreshore councils look forward to implementing recommendations from the Strategy over the coming years.

The Cooks River Integrated Interpretation Strategy was completed in January 2008, and can be downloaded from the Cooknet website.

Partners

- CRFWG (Project management)
- Burwood Council (Financial administration)
- City of Canterbury, Marrickville, Rockdale and Strathfield Councils

Funding

- Burwood, City of Canterbury, Marrickville, Rockdale and Strathfield Councils: \$21,000 plus in-kind
- DOP, CRFIP (Round 2): \$25,000
- Canterbury Hurlstone Park RSL: in-kind (hosted community workshop)
- CRFWG: in-kind

RiverLife Interpretive Tour Program

2003 - continuing

Project Description

The Riverlife Interpretive Tour Program provides leisure tours of the Cooks River Catchment that enable the community to learn about the local environment and participate actively in the sustainability of the catchment area.

Walking, cycling, kayaking, and sketching tours are conducted, as are tours designed specifically for children. The whole length of the Cooks River is represented in the tour program, including tributaries such as Cup and Saucer Creek and Wolli Creek.

Volunteer guides develop their own tours, which cover a diverse and fascinating range of topics, including local social history, industrial landscape, flora and fauna and local wetlands. All tours increase community awareness of the Cooks River Catchment environment and raise

concern for sustainability.

The RiverLife Interpretive Tour Program originated as part of the RiverLife stormwater education project funded by the NSW Government's Stormwater Trust in 2002 – 2003.

Status

RiverLife was the overall winner in the Environmental Education category of the 2007 Local Government and Shires Association of NSW Excellence in the Environment Awards.

Thirty-eight tours were delivered in 2006/07, with 296 members of the community participating. There were 19 tours in 2007/08 with 127 participants. Since the Program's inception in 2003, over 116 tours have been delivered with 1,014 participants.

Feedback remains very positive about the tours and the program. A number of committed volunteer guides continue to run their regular tours, while new tours have also been developed and delivered, including a bilingual tour in English and Mandarin and a tour to watch the cleaning of a gross pollutant trap in Riverside Crescent, Marrickville.

A stable long-term source of funding is vitally needed to ensure the continuity of this popular and valuable program.

Partners

- Marrickville Council (project management)
- City of Canterbury and Strathfield Councils
- Community volunteers
- DECC
- CRFWG

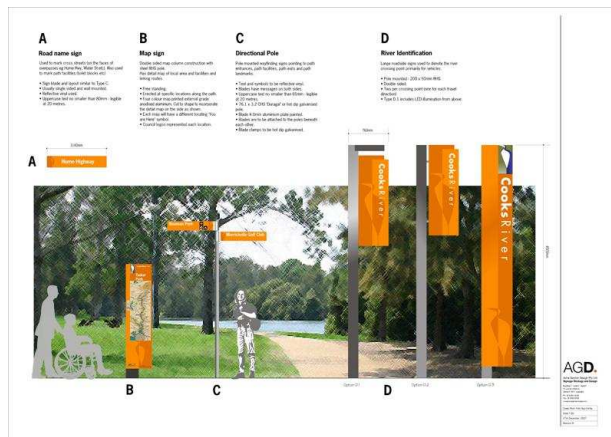
Funding

- DECC, 'Our Environment: It's a Living Thing' Program (June 2005): \$64,919
- Marrickville Council: in-kind
- Community Volunteers: in-kind



Riverlife Sweet & Sour Tour (Photo: Chris Lee); Volunteer Joy Berville and Riverlife Project Officers Rebecca Whitehall & Craig Jones, accepting LGSA award (Photo: Marrickville Council); High Tide night tour of Tempe Reserve Wetlands (Photo: Judy Pincus)

Regional projects



Updated concept designs for the new Cooks River Path signage family

Cooks River Path Signage Strategy

2001 - continuing

Project Description

This project involves the planning and design of a new, coordinated system of wayfinding and other signage for use along the entire Cooks River path from Strathfield to Botany Bay.

The new signs will assist path users to better navigate and explore the Cooks River foreshores and beyond. They will also help boost the River's profile by providing an attractive and unified style of signage along the entire route.

The project is based on recommendations in the CRFSP and the Cooks River Signage Audit (2000).

Status

Concept designs for the new Cooks River sign family were revised in late 2007. Detailed artwork, including maps and manufacturing specifications, is expected to be finalized by late 2008. The **Cooks River Path Signage Strategy Volume 1 - Implementation Guidelines**, completed in October 2007, provides maps and schedules of recommended sign locations, content and costs, to guide the councils in implementing both Cooks River family and RTA-type signs along the foreshore path and linking routes.

Installation, to be undertaken by the councils, will begin as soon as design documentation has been finalized. See below for details.

Partners

- CRFWG (Project management)

- Burwood, City of Canterbury, Marrickville, Rockdale and Strathfield Councils

Funding

- CRFWG (Project management): in-kind
- Burwood, City of Canterbury, Marrickville, Rockdale and Strathfield Councils: \$38,655, plus in-kind
- DOP, Metropolitan Greenspace Program: \$66,030
- RTA (2002): \$2,669

Implementation of Cooks River Path Signage Strategy

2005 - continuing

Project Description

Implementation of the new regional Cooks River Path sign family, including wayfinding and river identification signs, based on the **Cooks River Path Signage Strategy** currently being developed by the CRFWG and the foreshore councils (see above).

Status

Installation of the new sign family is expected to begin in late 2008 or early 2009, following finalisation of design specifications and artwork. Implementation will be done by each council in its own LGA, with general coordination and oversight by the CRFWG Coordinator.

CRFIP Round 2 funding was awarded as a regional grant to assist the partner councils with implementation. Strathfield Council secured a CRFIP Round 4 grant for implementation of the new sign family in the Strathfield LGA. Other councils are combining signage implementation with other path improvement works, so not all associated financial commitments and grant funding are shown here.

Partners

- Burwood, City of Canterbury, Marrickville, Rockdale and Strathfield Councils
- CRFWG

Funding

- DOP, CRFIP (Round 2): \$35,000
- Burwood, City of Canterbury, Marrickville, Rockdale and Strathfield Councils: \$35,000 plus in-kind
- DOP, CRFIP (Round 4): \$30,000 (for implementation in the Strathfield LGA)
- Strathfield Council: \$30,000 (for implementation in the Strathfield LGA)

Cooks River Pedestrian & Cycle Path Improvement Study

2004 - 2006

Project Description

This project set out to identify safety, access and other shortcomings of the Cooks River section of the iconic Bay-to-Bay Cycleway, one of Sydney's oldest shared walking and cycling paths, and to recommend solutions and improvements.

As a collaborative project involving seven local councils, three state agencies and a range of community stakeholders, the project was able to consider the path in both its regional context and its local detail to produce a more coordinated, coherent and strategic approach to the path's maintenance, servicing and development.

Status

The **Cooks River Pathway Development Strategy**, completed in December 2006, identifies some \$20 million worth of works that can be undertaken by councils, the RTA and other landholders to improve the safety, legibility and functionality of the path.

The foreshore councils have incorporated many recommended works from the Strategy into their works programs and numerous improvements have already been completed or commenced (See the Path Improvement Projects table on page 41 for details of works planned, underway or completed during the past two years).

Partners

- CRFWG (Project Management)
- Burwood, City of Canterbury, City of Sydney, Marrickville, Rockdale and Strathfield Councils
- DOP
- RTA
- Sydney Water

Funding

- Burwood, City of Canterbury, City of Sydney, Marrickville, Rockdale and Strathfield Councils: \$19,000 plus in-kind
- DOP, CRFIP (Round 1): \$21,000 plus in-kind
- City of Botany Bay: in-kind
- RTA: in-kind
- Sydney Water: in-kind

Strathfield Council has implemented a recommendation of the *Pathway Development Strategy* to relocate and improve the Maria St crossing, and to construct a separate path beside, rather than through, the Southend Tennis Centre car park.

Lower Cooks River Catchment Bus Tour

2006

Project Description

A bus tour showcasing sites in the lower catchment where local community groups and volunteers are undertaking bushcare and revegetation works, was held for community members. The purpose of the tour was to promote the extraordinary work being done by local community groups to restore and improve natural values in the Cooks River Valley and to provide an opportunity for members of different groups to meet and exchange ideas and information.

Status

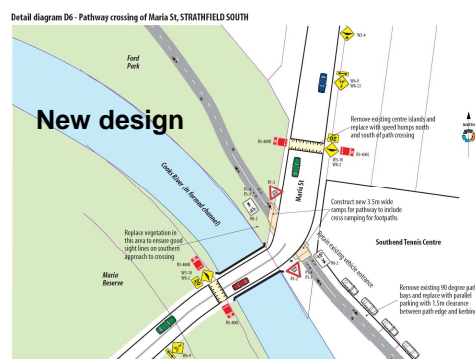
The bus tour was a great success with 40 people participating. Sites visited included the Cooks River Valley Garden, Tempe; Bush Pockets Project, Marrickville; Wolli Creek and Bardwell Valley Parklands; and Binnamittalong Gardens, Bexley. It is hoped that a similar tour of the upper catchment can be held in the future.

Partners

- SMCMA
- CRFWG

Funding

- SMCMA: cash and in-kind
- CRFWG: in-kind



Regional projects

Cooks River Bank Naturalisation Project and Flood Study (Sydney Water)

2007 - continuing

Project Description

Significant sections of the concrete that lines the Cooks River in Strathfield, Burwood and Marrickville, are deteriorating due to aging and the harsh environment in which they are located. Sydney Water, which owns and manages these concreted reaches, is investigating the potential to replace the concrete or naturalize the banks in ways that will improve the aesthetic, natural and social values of the banks, river and adjacent areas.

Consultants engaged by Sydney Water are developing an overall naturalisation master plan for the River from Strathfield to the Alexandra Canal, as well as concept designs for specific sites which have been prioritised for renewal within its current stormwater renewals budget and timeframe.

To properly assess the potential for naturalisation, a flood study is also being undertaken, to ensure the hydraulic capacity of the river is not compromised (ie, the risk of flooding is not increased) by the renewal works.

Both sub-projects are being managed by a multi-stakeholder project working group, including representatives from the CRFWG, and will

include significant stakeholder (including public) consultation.

Sydney Water invited local councils and other stakeholders to extend the scope of both the flood study and naturalisation master plan to include additional areas of interest, outside Sydney Water's area of responsibility, in their study. This will allow greater flood management, environmental, social, aesthetic and financial benefits for all stakeholders along the River, and better outcomes for the Cooks River itself.

Status

The flood study and naturalisation master plan and concept designs are due for completion by November 2008. Flood modeling developed through the flood study will be used to test concept designs. Detailed design is scheduled for development from November 2008 to June 2009, and construction is planned to start by July 2009. Community consultations have been held and more are planned when the master plan and concept designs are released.

Partners

- Sydney Water
- Marrickville, Strathfield, Botany Bay, Burwood, Rockdale, City of Sydney Councils
- SMCMA
- CRFWG
- Sydney Airports Corporation



Cooks River concrete channel under construction. Canterbury, 1939
(Source: Marrickville Council)



Photo: Sydney Water



Cup & Saucer Creek
Photo: Judy Pincus

The concrete channels neither contribute to the ecological health of the river nor provide habitat for native plants and animals.

Botany Bay Coastal Catchments Initiative (BCCCI)

2007 - continuing

Project Description

This initiative seeks to achieve long term protection of the surface waters of Botany Bay, its estuaries and catchment. It is one of several Coastal Catchments Initiatives underway around Australia under a national program designed to improve and protect water quality in coastal hotspots by promoting competent water quality planning.

The ultimate goal of the BCCCI is to develop an agreed water quality improvement plan for the Bay and its catchment.

To this end, a key output of the project is the development of a scientifically derived ecological response model for Botany Bay and its estuaries that can be used to model the impacts of changes in the catchment on the ecological communities of Botany Bay and its estuaries. The model primarily focuses on the impacts of pollutants washing off hard surfaces in the catchment, eg, suspended solids, nitrogen and phosphorous, and ending up in the Bay and tributaries.

Another key aim of the project is to engage with councils and key stakeholders in the Botany Bay Catchment so they can participate in finding and implementing innovative solutions to improve water quality in the Bay and catchment.

The CRFWG is represented on the BCCCI Stakeholder Reference Committee, which was established to inform community and government stakeholders of progress and seek input on issues as they arise.

Status

The BCCCI commenced at the beginning of 2007. The first phase, completed in June 2008, included the development of the Ecological Response Model and the use of that model to estimate pollution loads from specific council and land use areas and examine the effects of various future growth and management scenarios, based on the DOP's Metropolitan Strategy, on the Bay and its estuaries.

Draft water quality objectives, pollutant load targets aimed at protecting environmental objectives identified through the project, as well as management options for meeting those objectives and targets, are still being finalized.

A strategy was also developed for supporting councils and other government agencies to adopt water sensitive urban design (WSUD) principles and practices and include WSUD in their planning processes.

The SMCMA is seeking further funding to enable it to proceed with development of the desired water quality improvement plan for the Bay and its catchment.

Further information can be found on the BCCCI website at www.sydney.cma.nsw.gov.au/bccci.

Partners

- SMCMA (project management)
- Australia Department of the Environment, Water, Heritage and the Arts

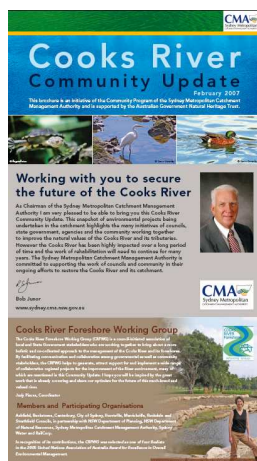
Funding

- SMCMA (part) and the Australian Government, Natural Heritage Trust, Coastal Catchments Initiative (majority): \$1,060,000 (January 2007 - June 2008)



The Botany Bay Catchment includes the Cooks River and Georges River systems, and some of the Eastern Beaches region.

Regional projects



Cooks River Community Update

2006 - 2007

Project Description

A 'Cooks River Community Update' brochure was developed to help inform the community about the many CRFWG, council, community, SMCMA and other state

government agency initiatives underway to improve the catchment environment. The Update also aims to encourage people to become actively involved in caring for the catchment.

Status

The brochure was published in February 2007 and distributed through the councils and at the 2007 Cooks River Forum.

Partners

- SMCMA (planning, editorial, design and printing)
- CRFWG (planning, editorial)
- CRFWG member councils (distribution)

Funding

- SMCMA: \$10,000 plus in-kind
- CRFWG: in-kind
- CRFWG member councils: in-kind

Development of a Cooks River Open Space Plan

2005 - 2006

Project Description

This project entailed preparation of an Open Space Plan for the Cooks River Corridor as a connected, river-based open space system. The Plan details the extent and hierarchy of open space in the corridor, and the characteristics of the corridor as a regional system. The outputs include a report and a flexible updateable GIS electronic database, which build upon previous documents, studies and open space plans prepared by the individual Councils for the study area.

Status

The Open Space Plan has been completed and the GIS database designed.

Partners

- DOP (Project Management)
- CRFWG
- Project Advisory Group (comprising foreshore councils, the CRFWG Coordinator, Sydney Water and other stakeholders)

Funding

- DOP (Sydney Regional Development Fund, 2005/06): \$50,000

Cooks River Foreshore Landscape & Access Guidelines

2005 - 2006

Project Description

Guidelines have been developed by the DOP, in consultation with the CRFWG, the foreshore councils and Sydney Metropolitan CMA, to ensure that future foreshore improvements achieve a level of quality and consistency that is appropriate to a regional open space corridor.

The guidelines provide consistent principles of design and management for the development of spaces and landscape elements along the foreshore corridor. Because of the need to balance landscape consistency with the different identities of individual Councils, the focus of the guidelines is on achieving quality results rather than specifying exactly what a particular space or element should look like.

The guidelines are designed to complement and be read in conjunction with other strategic documents relating to the foreshores, including the *Cooks River Path Signage Strategy*, *Cooks River Integrated Interpretation Strategy*, *Cooks River Pathway Development Strategy* and the *Cooks River Open Space Plan*.

Status

The Guidelines are completed and circulated.

Partners

- DOP (Project management)
- Burwood, City of Canterbury, Marrickville, Rockdale and Strathfield Councils
- CRFWG

Funding

- DOP, CRFIP (Round 2): \$20,000

The following is a partial listing of projects initiated, run and/or supported by CRFWG members, to implement projects consistent with the Cooks River Foreshores Strategic Plan.

Unless otherwise stated, funding figures represent the cumulative amount (excluding GST) expended on and/or committed to the project to 30th June 2008. The figures provided are based on the best information available at the time of printing.

Alexandra Canal Path Concept Design Study

2007 - continuing

Project Description

Marrickville Council has the long-term aim of creating a green space and active transport corridor alongside the Alexandra Canal. This project will take a significant step towards achieving this goal through developing designs, negotiating access and surveying the potential route.

Status

Commencement of this project has been delayed due to probable impacts from the desalination plant water distribution pipeline that appears likely to traverse this area.

Partners

- Marrickville Council

Funding

- DOP, CRFIP: \$15,000
- Marrickville Council: \$15,000

Bank Restoration, Gough Whitlam Park

2002 - continuing

Project Description

This project entails design and construction of works to stabilise and rehabilitate eroding riverbanks along Gough Whitlam Park, Earlwood, using ecologically sensitive treatments, including re-creation of saltmarsh



Gough Whitlam Park Bank Restoration works – during and approximately six months (See cover photo for close up of completed works.)

and mangrove areas and planting of riparian zones with local provenance native species. The works also aim to improve access and visual amenity of the foreshores and to provide visitors with potential learning experiences in restoration ecology.

This site was identified as requiring erosion control works in the CRFSP and was one of three sites (along with Kendrick Park and Freshwater Park) for which initial site assessments and concept designs were undertaken through the CRFWG's Cooks River Bank Restoration Project (2001 – 2002).

Status

Foreshore restoration works along an approximately 650m stretch of riverbank, between Unwins Bridge at Bayview Avenue and the aqueduct at the eastern end of Wanstead Avenue Reserve, have been planned and staged for completion as funds become available.

Construction and planting of 410m of riverbank, 3,050m² of new saltmarsh and 80m² of phragmites habitat in Zones C and D (upstream from Unwins Bridge) commenced in May 2007 and were completed in late 2007. Council is seeking grant funding to assist it to complete works in Zones A and B (downstream from the aqueduct).

Partners

- City of Canterbury

Funding

- City of Canterbury: \$360,000
- DECC, Estuary Management Program: \$150,000



Other projects

Bardwell Creek Stormwater Management Works

2006 - 2007

Project Description

Construction of three large gross pollution traps by Sydney Water on a branch inlet of the Bardwell Valley Creek to trap water-borne gross pollutants that would otherwise have entered Wolli Creek.

Status

Completed. Ongoing cleaning and maintenance of traps will be undertaken by Sydney Water.

Partners

- Sydney Water (Project management)
- Rockdale Council

Funding

- Sydney Water: \$850,000

Bardwell Valley Plan of Management

2006 - continuing

Project Description

Rockdale Council is updating the 1993 Plan of Management for Bardwell Valley following a detailed review of the existing plan.

Status

The review and update is near completion and will be finalized following completion of an Open Space and Recreation Strategy for the entire Rockdale LGA, to ensure the two documents relate.

Partners

- Rockdale Council

Funding

- Rockdale Council

Bush Regeneration, Campsie Bushland

2004 - continuing

Project Description

This project involves bush regeneration of a small but highly significant patch of remnant bushland along the Cooks River foreshores, which has survived due to its isolated location between the River channel and stormwater drains. Work is based on actions identified in the

Plan of Management prepared by Council for this site in 2005, and complements work over the last decade by a team from the National Trust of Australia (NSW).

Status

Continuing work in this remnant bushland has primarily concentrated on weed control, including primary weed control and boundary monitoring to limit weed incursions. A total of 289 hours of bush regeneration work and reporting were spent in the reserve in 2007/08.

Partners

- City of Canterbury
- National Trust of Australia (NSW)
- DOP

Funding

- City of Canterbury: \$7,500 cash
- DOP, CRFIP (Round 4): \$7,500



Participants on a tour of Campsie Bushland, organized by the City of Canterbury, and wondering at the unique *Casuarina* species, September 2007. (Photo courtesy of City of Canterbury)

Bush Regeneration, Wollli Creek Regional Park, Johnston Street, Earlwood

2006 - continuing

Project Description

The Wollli Creek Preservation Society is rehabilitating a 2ha area of bushland in the western section of the developing Wollli Creek Regional Park. The area has been identified as a priority area in the Wollli Creek Regional Park Bushland Regeneration Operations Plan.

This project is taking an innovative approach to long-term willow replacement along the creek bank and includes a community education element.

Status

Volunteers and contractors have continued primary weed removal and path work. Community planting days were held in 2006 and 2007 and the plantings have been maintained since then. Preliminary work was completed on rehabilitating a stormwater outlet below Johnston Street. So far, close to 700 hours of volunteer time has been contributed by WCPS volunteers. Additional funding is being sought to support further works in this area.

Partners

- Wollli Creek Preservation Society
- City of Canterbury

Funding

- Environmental Trust: \$39,318 (2006-2008)
- WCPS: in-kind
- City of Canterbury: in-kind

Cahill Park Plan of Management

2006 - continuing

Project Description

Rockdale Council has begun preparation of a Plan of Management for Cahill Park. The plan is to be approved in late 2008.

Cooks River Arts and Sustainability Festival

2005 - continuing

The annual Cooks River Arts and Sustainability Festival, held by Marrickville Council since 2005 in Steel Park, showcases local arts alongside environmental education and awareness programs with a lot of good fun.

The third annual event in April 2007 attracted a large and diverse audience from across the region, thanks to widespread media interest. There was also a strong show of support from local political officials, including the Federal Members for Grayndler and Marrickville, the Mayors of Marrickville and City of Canterbury, the Deputy Mayor of the City of Botany Bay and the Marrickville councillors, who all came along to enjoy the day. The Chairman of the Sydney Metropolitan CMA, Bob Junor, took the opportunity to give a public show of support for the CRFWG by presenting the CRFWG Coordinator with a cheque from the CMA to assist with ongoing coordination of the Group.

The April 2008 Festival drew 2000 people in just its first 2 1/2 hours and would probably have attracted many more if the event hadn't had to be closed early due to a storm. Marrickville Council's third annual *Sustainable Water Showcase* offered demonstrations, films, workshops, and tours to promote water conservation, grey water reuse and rainwater harvesting in homes and businesses. The *Eco-Learning Tent* featured a series of bilingual films about global warming created by students from the Saturday School of Community Languages, and the popular insect 'bug biodiversity' show. A **RiverLife Interpretive Tour** took people to watch the cleaning of a nearby gross pollutant trap. The *Sustainable Artists Galley* displayed artworks from the **Riverworks Cooks River Environmental Sculpture Competition** and featured a sculpture workshop based on the *Illawarra Road Community Water Vision 2050* along with creative drawing and painting classes using bio paints.



The CRFWG representative for the City of Canterbury, David Bell, and the lead consultant for the Cooks River Interpretation Strategy Project, Cath Renwick, engage with community members at the CRFWG stall in the Sustainable Water Showcase at the 2007 Cooks River Festival.

Other projects

Cooks River Eco-Volunteers (The Mudcrabs)

2005 - continuing

Project Description

'The Mudcrabs' was established in July 2005 as an initiative of local residents in the Hurlstone Park - Earlwood area. The group undertakes litter cleanups along the foreshores in the Canterbury and Marrickville LGAs and has adopted Rosedale Reserve as an ongoing bush regeneration project. Both City of Canterbury and Marrickville Councils provide tools and equipment for their work. The Mudcrabs also supports the Riverworks Cooks River Environmental Sculpture Competition (see below).

Status

The Mudcrabs have over 500 members and regularly attract 30 - 40 people to monthly working bees. In 2006/07, the group removed 220 bags of rubbish (60m³) from the foreshores in four clean up events, and undertook secondary weed removal at Rosedale Reserve. In 2007/08, the group removed 800 bags of rubbish (240m³) from the foreshores in nine clean up events, undertook secondary weed removal, and replanted over 500 plants. Revegetation work is scheduled to begin on a new site at Foord Ave, Hurlstone Park, in December 2008.

Partners

- The Mudcrabs
- City of Canterbury and Marrickville Councils

Funding

- City of Canterbury and Marrickville Councils: \$3,000 (cash and in-kind)
- The Mudcrabs: in-kind

Cooks River Restoration, Freshwater Park (Area A) - Revegetation and Maintenance

2005 - April 2007

Project Description

This project is part of Strathfield Council's ongoing Cooks River Bank Restoration Project, which aims to stabilise riverbanks and revegetate the riparian corridor along the Cooks River within Freshwater Park, Strathfield.

This stage of the project addressed noxious and environmental weed invasion, which continually threatens the long-term success of the now established restoration works.

The project continues implementation of a demonstration project highlighted in the **Cooks River Foreshores Strategic Plan**. The site was one of three priority sites (along with Kendrick Park and Gough Whitlam Park) for which initial site assessments and concept designs were undertaken through the CRFWG's Cooks River Bank Restoration Project (2001 - 2002).

Strathfield Council's Cooks River Restoration work in Freshwater Park won the Keep Australia Beautiful NSW, Sustainable Cities Award for Biodiversity Conservation in August 2007.



Area A before - heavily infested with weeds and highly degraded.



Freshwater Park, Area A, May 2007 - pools and riffles and healthy riparian vegetation provide habitat and protect from erosion. Photo by Jeanie Muspratt

Status

On-ground works, completed in April 2007, included the following:

- Removal and control of invasive terrestrial weeds on the river banks through monthly contracted maintenance;
- Removal and control of invasive aquatic weeds, including Alligator Weed (*Alternanthera philoxeroides*) and Water Primrose (*Ludwigia peruviana*);
- Propagation and planting of 15,000 local provenance plants, consisting of some 42 different locally indigenous species, from Council's Strathfield Native Nursery; and
- Monitoring and evaluation.

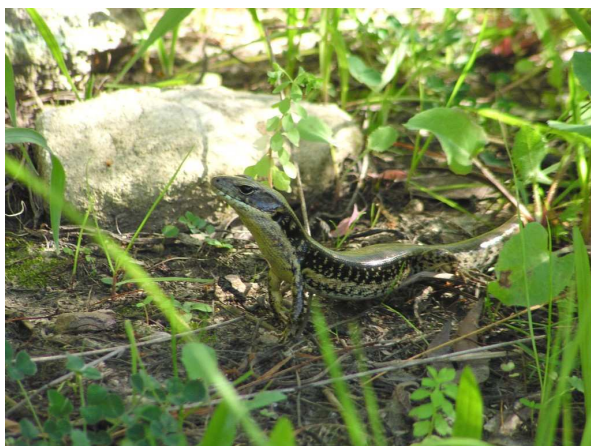
Council is currently considering options for ongoing weed management and maintenance.

Partners

- Strathfield Council (Project management)
- Strathfield Golf Club
- SMCMA

Funding

- Strathfield Council: \$69,374 (\$62,082 cash; \$7,292 in-kind)
- SMCMA, Icon Projects (2006/07): \$32,150
- DPI, Sydney Central Regional Weeds Committee Alligator and Ludwigia Control Group Project (2006/07): \$6,000
- Strathfield Golf Club (2006/07): \$1,120 (in-kind)



Resident skink amongst rockwork and vegetation at Freshwater Park, Strathfield. Photo: Jeanie Muspratt, Strathfield Council, May 2007

Cooks River Restoration, Freshwater Park, Strathfield (Stage 3 - Area B)

2005 - 2008

Project Description

This project involves weeding, revegetation and minor bank stabilization works along the final 400m stretch of the Cooks River targeted for restoration work in Freshwater Park. Works involve minor rock work to prevent further erosion adjacent to an in-stream stormwater outlet, widening of the riparian corridor and gradual replacement of weeds, including willows, with indigenous, local provenance species.

Status

Construction and initial planting have been completed. Strathfield Golf Club will assist Council with ongoing revegetation, monitoring and maintenance works.

Partners

- Strathfield Council (Project management)
- Strathfield Golf Club

Funding

- Strathfield Council: \$233,250 (\$204,000 cash; \$29,250 in-kind)
- DOP, CRFIP: \$160,000 (2005/06)

Cooks River Valley Garden

July 2001 - continuing

Project Description

Located within Tempe Recreational Reserve, this living museum showcases over 80 plant species native to the Cooks River Valley. It was originally planted by the community to help restore the Alexandra Canal foreshore and to establish a section of green corridor as part of a Natural Heritage Trust and Sydney GreenWeb funded project.

All species for the gardens have been collected and propagated within the Cooks River Valley (by Marrickville Community Nursery, Strathfield Council's Strathfield Native Nursery or Randwick Council's nursery), which means the CRVG can become an additional seed bank for propagating indigenous species for future revegetation projects. Plant selection has been based on the book, *Missing Jigsaw Pieces* (Sydney Royal Botanic Garden with assistance from the CRFWG, 1999).

Other projects

Planting and maintenance work are performed by volunteers from the local community, with support from Council.

Status

Members of the Friends of Cooks River Valley Garden, launched by Council in May 2005 to foster community ownership of the site, have continued maintenance works, including weeding, mulching, pruning and in-fill planting, with Council support.

Since the initial grant funding ran out, Marrickville Council has continued to fund ongoing management of the garden.

Partners

- Marrickville Council
- Marrickville Community Nursery (plants)
- Friends of the Cooks River Valley Garden

Funding

- Marrickville Council: \$50,000 + \$13,650 (2007) + in-kind
- Commonwealth Government, Natural Heritage Trust: \$9,900
- GreenWeb Sydney (devolved NHT grant): \$16,800
- Community volunteers (2007): \$5,340 (in-kind)

Cooks River Vegetation Regeneration

2006 - continuing

Project Description

Propagation and vegetation enhancement at Richardson's Lookout and Tempe Reserve.

Status

Richardsons Lookout planting works were completed in May 2008 following Stage 2 stormwater drainage works. A third stage of planting and embankment control works is scheduled for March 2009.

Implementation of the Tempe Reserve planting masterplan is on-hold, pending confirmation of any impact by the Desalination Plant Pipeline project.

Partners

- Marrickville Council

Funding

- Marrickville Council: \$65,000 (cash & in-kind)

- DOP, CRFIP: \$65,000

Cooks River Water Quality Monitoring Study

November 2006 - June 2007

Project Description

This project involved testing water quality at seven sites throughout the Rockdale part of the Cooks River Catchment for comparison to water quality data collected for a study completed in 1999. The aim of the study was to identify areas needing water quality improvement and assess the overall health of the waterways in order to inform planning and management of the City's waterways.

Status

Testing has been completed. A number of sites require further investigation to either identify the source of the water quality problem or confirm there is an ongoing problem and not just skewed study results. This investigation will be undertaken by Council's Water Management Team.

Partners

- Rockdale City Council

Funding

- Rockdale City Council: \$15,000



Cooks River Valley Garden
(Source: Marrickville Council, 2008)

Dean Reserve - Stage 3 Upgrade

2006

Project Description

This project is part of a four-stage upgrade of Dean Reserve, a former brick pit and tip that Strathfield Council is converting into a rich recreational resource for the local and wider community.

Stage 3 involved the construction of new playground, bike track and picnic facilities and further revegetation of the site with local provenance indigenous vegetation to contribute to the creation of a continuous green corridor along the Cooks River foreshores.

Status

Stage 3 of the improvement works has been completed. An opening/planting day for the local community and bushcare groups was held on Saturday 25 November 2006.

The imaginative and adventurous playground installed as part of Stage 3, was awarded the NSW Minister for Planning's Sydney Greenspace Award in 2007.

Partners

- Strathfield Council

Funding

- Strathfield Council: \$150,000 (cash and in-kind)
- DOP, CRFIP (Round 1): \$150,000

Dean Reserve Pit Stop - Stage 4 Upgrade

2007 - continuing

Project Description

This extra stage of the extremely successful upgrade of Dean Reserve involves the installation of a public toilet and a teen hangout area, including stone seating and a small court area for handball / basketball.

Status

Landscape design is complete and Council is assessing quotations for construction.

Partners

- Strathfield Council

Funding

- Strathfield Council: \$230,000

**WINNER - SYDNEY
GREENSPACE AWARD**



Strathfield Council was awarded the NSW Minister for Planning's Sydney Greenspace Award 2007, for the playground it has established in Dean Reserve. The award was shared with Parramatta City Council for their multi-million dollar renovation of Church Street Mall.

It is unusual for a place dedicated and designed primarily for play and fun to be considered for such a prestigious award. The judges remarked that "...the result is a confident balance of environmental art, rich recreational opportunities and high environmental design standards, which already has the enthusiastic support of the Strathfield community."

Improving Biodiversity in Streetscapes

2006 - continuing

Project Description

This project aims to improve ecological and environmental quality in the urban landscape through the use of alternative local native species in street and park plantings. It will produce species lists and information; develop and refine decision-support tools; identify test

Other projects

planting sites and facilitate local community involvement in urban ecological projects.

Status

Students from the Department of Science at UTS have completed a desktop review of conditions and microclimates in the Strathfield area. A species-specific trial list has been developed and seed collection and propagation has commenced.

Partners

- Strathfield Council
- Sydney Metropolitan CMA
- University of Technology, Sydney
- CRFWG

Funding

- SMCMA, Catchment Initiatives Icon Projects Program (2005): \$38,000
- University of Technology: in-kind
- Strathfield Council: in-kind

Kendrick Park Foreshores Restoration

2002 - continuing

Project Description

This project involves detailed design and on-ground works for the rehabilitation of eroding banks and restoration of saltmarsh and other local native riparian vegetation along the foreshores at Kendrick Park.

This site was identified as requiring erosion control works in the CRFSP and was one of three sites (along with Gough Whitlam Park and Freshwater Park) for which initial site assessments and concept designs were undertaken through the CRFWG's Cooks River Bank Restoration Project (2001 – 2002).

Status

A feasibility assessment, concept and master plan, incorporating both foreshore restoration and refurbishment of the path network and park facilities, were completed in 2005/06.

A Conservation Management Plan was developed in February 2008, but changes to Marrickville's Aboriginal Site Protection Policy will necessitate further amendment to the CMP. Amendments are expected in December 2008, and will be included in a DA for foreshore restoration works to be lodged at the same time. Work is expected to start by May 2009, subject to all approvals from various stakeholders and

other statutory managers.

Partners

- Marrickville Council

Funding

- Marrickville Council: \$130,000 (cash and in-kind)
- DECC, Estuary Management Program: \$100,000
- DOP, CRFIP (Round 1): \$30,000
- DOP, CRFIP (Round 4): \$165,000

Kyeemagh Boat Ramp Improvements

2007

Project Description

Structural works to improve the regional boat ramp on Cooks River near Mutch Avenue, Kyeemagh for the benefit of the boating community.

Status

A new floating pontoon, access ramp and seawall were installed on the western side of the existing four-lane boat ramp. Council also stabilised a 10m long section of the Cooks River revetment wall at this boat ramp, which was subsiding and in danger of collapse.

Partners

- Rockdale Council

Funding

- Rockdale Council: \$130,000
- NSW Maritime: \$50,000

Kyeemagh Boat Ramp Reserve Foreshore Improvement

2006 - continuing

Project Description

This project aims to increase the open green space along an 80 metre length of the Cooks River Foreshore at the Kyeemagh Boat Ramp Reserve, Mutch Avenue, Kyeemagh. The existing roadway will be removed and replaced by landscaping, a footpath, cycle path and picnic facilities. The proposed works will enhance use of this regional boat ramp and increase community appreciation and enjoyment of Cooks River foreshore open space.

These works will implement the *Kyeemagh Boat*

Ramp Reserve Landscape Improvement Plan (2000) and the Kyeemagh Boat Ramp Reserve Plan of Management (2002) previously prepared by Council.

Status

Council was awarded a grant under Round 4 of the CRFIP to assist with implementation of these improvements. Design work is underway and refurbishment works are planned for 2008/09.

Partners

- Rockdale Council

Funding

- Rockdale Council: \$68,000
- DOP, CRFIP (Round 4): \$68,000

Ludwigia and Alligator Weed Control, Wolli Creek

2004 – (2009)

Project Description

As part of a five-year regional project focusing

on implementation of Sydney-wide Ludwigia and Alligator Weed Management Plans in the Sydney Central region, City of Canterbury and Rockdale Councils are working to remove Alligator Weed and Ludwigia from Wolli Creek.

Status

Work commenced in March 2004. Follow-up Alligator Weed control was conducted over three applications between November 2005 and April 2006, and again in 2007/08. The City of Canterbury Council undertook Ludwigia eradication in Wolli Creek in 2007/08 with financial assistance from NSW Department of Primary Industries.

Partners

- City of Canterbury and Rockdale Councils
- DPI

Funding

- City of Canterbury: \$1,000 + \$4,899 (2007/08)
- Rockdale Council: \$1,000
- DPI: \$2,000 + \$2,000 (2007/08)

Marrickville Fauna Study 2007

Fauna surveys were conducted in the Marrickville LGA in 1992 and 1996 as a component of the State of the Environment Report. These generated a snapshot of the species living in the area, the sites used for habitat and the impact of management practices. In February 2007, a third survey was conducted by Australian Museum Business Services (AMBS).



Long-nosed bandicoot (Marrickville Council, 2008)

The 2007 Marrickville Fauna Survey was conducted on the eight sites previously surveyed and two additional sites. A total of 87 species were recorded, representing 27% of the 316 species expected to be found in this region from previous recordings by the Department of Environment and Climate Change, the Australian Museum and Birds Australia.

Surprising discoveries included a long-nosed bandicoot carcass and hairs from a Swamp Wallaby along the Dulwich Hill freight rail corridor; two threatened bat species, a Tawny

Frogmouth (Camperdown Cemetary), Little Grassbirds (Tempe Lands) and the Red-rumped Parrot.

The survey has provided a series of recommendations for Council on how to better manage habitat and open space to protect and expand the fauna found. Further information can be found in the full report available on the Marrickville Council website and at Marrickville Library.

Long-nosed bandicoots

There have been infrequent and unconfirmed sightings of long-nosed bandicoots (*Perameles nasuta*) in the Inner West suburbs of Lewisham and Dulwich Hill for a number of years. The 2007 Fauna Study confirmed their presence in the freight rail corridor. The Australian Museum believes that the bandicoots

Other projects

may be using the rail corridor to access parkland to the north and the Cooks River foreshores to the south.

Bandicoots had not been officially recorded in the area since the 1950s, but sightings have been on the increase recently. Unfortunately, most sightings have been of dead bandicoots killed by dogs or cars away from the rail corridor. It is not known why this is happening, but it may be due to population increase, loss of habitat, disturbance and drought. DECC has been notified of the population and it has been put forward for listing as a Threatened Population under the NSW Threatened Species Act. DECC is also undertaking some tracking of the population in the Lewisham area. Data and information from the community on the whereabouts of the population is being gathered.

Nanny Goat Hill Bush Regeneration

1990s - continuing

Project Description

The City of Canterbury has contracted the National Trust (NSW) since the 1990s to undertake bush regeneration at Nanny Goat Hill, a prominent sandstone outcrop overlooking Wollie Creek, which contains a good example of Sydney Sandstone Heath vegetation.

Status

Works undertaken included weeding, maintenance of existing walking paths and litter removal.

Partners

- City of Canterbury
- National Trust (NSW)

Funding

- City of Canterbury: \$10,000 (2006/07)

Richard Avenue Stormwater Management, Wollie Creek

2006 - 2007

Project Description

The project has rehabilitated a stormwater outlet below Richard Ave, Earlwood, which was discharging litter, sediment and organic material into bushland adjacent to Wollie Creek. The project also involved the construction of a series of litter collection devices, adjacent to gutter pits that contribute stormwater to the pipe, and installation of a sandstone basin with native vegetation.

Status

Reconstruction of the outlet including rock armoring was completed in June 2007.

Revegetation of the site by volunteers from the Wollie Creek Preservation Society has also been completed. Additional funds for a litter collection device were received from the Australian Government Water Fund. The project is now complete.

Partners

- City of Canterbury
- Wollie Creek Preservation Society

Funding

- City of Canterbury: \$10,600 (cash and in-kind)
- Australian Government Water Fund, Community Water Grant: \$40,000
- WCPS: in-kind



Richard Avenue stormwater outlet into Wollie Creek, before and after rehabilitation works. (Photos: City of Canterbury)

Riverworks Cooks River Environmental Sculpture Competition

2006 - 2008

Project Description

Riverworks is a Cooks River-themed community environmental art competition held on the banks of the Cooks River at Gough Whitlam Park, Undercliffe. It was initiated by artist Bronwyn Tuohy and supported by members of The Mudcrabs to provide the community with an opportunity to come together to celebrate and enjoy the Cooks River through artistic and creative fun. The first Riverworks event was staged in March 2006.

Status

Riverworks events in 2007 and 2008, were made possible through a grant under the Cooks River Foreshore Improvement Program. Some 160 people participated in the second Riverworks, held in June 2007. Riverworks 2008 was more ambitious than previous events. Held over two days, it included an exhibition of works by professional artists, a lantern and boat flotilla for Earth Hour and, as in years past, an opportunity for the community to make their own environmental sculptures. Some 200 people attended and 150 sculptures were created.

Funding is being sought to allow Riverworks to continue into the future. Contact: Bronwyn Tuohy, Riverworks Coordinator, urban.icons@three.com.au.

Partners

- Riverworks
- City of Canterbury
- The Mudcrabs

Funding

- City of Canterbury: in-kind
- WSN Grass Roots grant: \$6,002 (for 2006)
- DOP, CRFIP (Round 4): \$59,470 (for 2007 & 2008)
- The Mudcrabs: in-kind



Riverworks 2007

(Source: Peter Munro)

Steel Sheet Piling Removal and Remediation Project (DECC)

2003 - continuing

Project Description

Riverbank stabilisation works implemented from the 1950s to the 1970s, between Canterbury Road and the Illawarra Road Bridge, consisted of vertical sheet piling, driven down to the rock profile and held in place by steel tie rods anchored to the river bank. This use of sheet piling was implemented in order to stabilize eroding river banks and create a service corridor for river bank maintenance via dredging and reclamation. Approximately 4.5km of riverbanks were treated in this manner.

In March 2003, faced with the failure and deterioration of sections of these steel structures and community and local government pressure to address this problem, the State Government announced plans to replace failing and deteriorating sections with more ecologically viable, safe and aesthetic bank treatments.

The project is being managed and funded by DECC, in consultation with Marrickville Council and the City of Canterbury, the Sydney Metropolitan Catchment Management Authority and the CRFWG.

Status

DECC engaged a consultant in February 2007 to carry out site investigations, initial studies and a Review of Environmental Factors for the initial stages of the project.

Detailed designs for suitable bank remediation works, based on a more natural treatment approach, have been developed. The planned remediation will involve trimming and removal of the corroded portion of sheet piling above mean

Other projects

sea level, stepping back the upper bank to create a more natural river profile and stabilising exposed soils with geotextile, growing medium, filter stone and vegetation. Stepped sandstone blocks will be used to protect the banks and foreshore reserves from erosion, wave and current action and allow for continued informal access and seating.

Areas have been prioritized for treatment and the most appropriate actions for each location have been determined. Five construction milestones have been identified on the north and south banks of the river between the Foord Avenue Footbridge and approximately 40m downstream of the Lang Rd footbridge.

DECC has engaged the NSW Department of Commerce to manage construction and contractual risks on this complex bank remediation project. The works went out to tender in late 2007, and construction began in late June 2008.

Partners

- DECC
- City of Canterbury and Marrickville Councils
- CRFWG

Funding

- DECC: \$2.92 million allocated



Deteriorating steel sheet piling and the sediment boom installed at the failed section in January 2007, in preparation for remediation works. (Photos: Judy Pincus)

Sydney Water Stormwater Quality Improvement Devices (SQIDs)

Sydney Water manages the stormwater trunk drainage system, consisting of 12 stormwater systems with a total length of 124 km, within the Cooks River Catchment. (Thirteen local councils

have responsibility for local drainage.)

Sydney Water's 13 Stormwater Quality Improvement Devices (SQIDs) collect litter and sediment from a 2,245 hectare catchment area within the Cooks River catchment.

In 2006/07, 953m³ of litter and 1,429 tonnes of sediment were collected. In 2007/08, 1,090m³ of litter and 1,732 tonnes of sediment were collected. Since 1998/99, these SQIDs have prevented some 9,937m³ of litter and 9,556 tonnes of sediment from entering and degrading the Cooks River.

Sydney Water is also reassessing options for improving stormwater quality entering the Alexandra Canal.

Tempe Reserve Picnic Grounds and Planting Master Plan

2005 - continuing

Project Description

A further stage of habitat improvement and embellishment of the regional picnic grounds was planned for 2006/07.

Status

All embellishment and construction activities have been on hold since November 2006, until potential impacts from construction of the Kurnell desalination plant water distribution pipeline are confirmed. Project has been deferred to 2008/09.

Partners

- Marrickville Council

Funding

- Marrickville Council: \$130,000
- DOP, CRFIP: \$70,000

Turella Reserve Weed Control and Revegetation

June 2007 - (December 2008)

Project Description

This project incorporates two sub-projects involving weed control and revegetation works along a 140m section of Wollie Creek in Turella Reserve. NSW Department of Environment and Climate Change undertook works to protect and improve the condition of remnant bushland through removal of weeds, stormwater remediation and infill planting, while the Wollie Creek Preservation Society and the City of

Canterbury undertook revegetation of a riparian lawn to extend and close the gap in the native vegetation corridor in the Wolli Creek Regional Park.

This project was identified through SMCMA consultations with the CRFWG councils and WCPS as part of the SMCMA's Waterways Health Strategy project. It was implemented through funding from the Green Web Sydney Corridor Improvement Program.

Status

The DECC component of the grant-funded project is now complete with maintenance and further expansion planned. Wolli Creek Preservation Society and the City of Canterbury have completed a large area of revegetation along the Wolli Creek bank, while a second area of revegetation planned for the drainage line had to be relocated due to stormwater works to be undertaken in 2009/10. Instead, a weed-infested storage pond will be converted to a small freshwater wetland in Spring 2008.

Partners

- City of Canterbury (Project management)
- Wolli Creek Preservation Society
- SMCMA
- DECC - National Parks and Wildlife

Funding

- SMCMA - GreenWeb Sydney (NHT): \$69,000
- DECC: \$35,000 + in-kind
- City of Canterbury: \$34,000 + in-kind
- WCPS: in-kind

Turella Weir Fishway

2006 - continuing

Project Description

This project will construct a fishway on the

downstream side of the Turella Weir to assist the passage of native fish and enable species needing to move seasonally between salt and freshwater to complete their life cycle.

The site was given top priority for remediation in the Cooks River / North Botany Subcatchment, in a review of fish passage within urbanised waterways in Sydney catchments, prepared by the NSW Department of Primary Industries for the Sydney Metropolitan CMA in 2005.

Partners

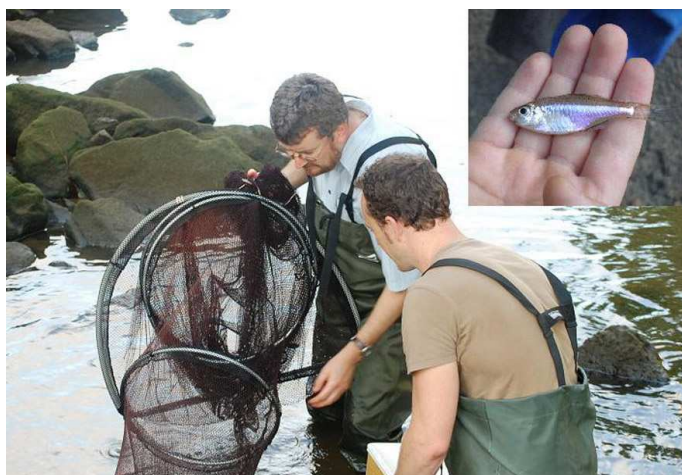
- City of Canterbury and Rockdale Councils
- Sydney Metropolitan CMA
- DOP
- DPI - Fisheries
- Wolli Creek Preservation Society

Funding

- City of Canterbury and Rockdale Councils: \$15,000 (cash and in-kind)
- DOP, CRFIP (Round 3): \$20,000
- Sydney Metropolitan CMA: \$50,000
- DPI - Fisheries, Bring Back the Fish Program: \$30,000

Status

Pre-construction netting to assess fish populations in the Creek above and below the weir site was completed in 2007, with permission from DPI - Fisheries. A Statement of Environmental Effects was completed in June 2007 and a Development Application has been approved for construction of the fishway. Rockdale Council is managing the construction phase. Construction is due for completion by the end of 2008. Further netting to assess fish populations will occur, post installation of the fishway, in early 2009.



CRFWG representative for the City of Canterbury, David Bell, and a scientist from the Department of Primary Industries sampling fish species below Turella Weir. Inset: Port Jackson Perchlet.
Photo: Voren O'Brien.

Other projects

Two Valley Trail

2006 - continuing

Project Description

The Two Valley Trail (TVT) is the initiative of a coalition of local community groups aimed at establishing and promoting public use and enjoyment of a 13km walking trail connecting Bexley North Station to Campsie Station via the beautiful bushland of Wollie Creek Regional Park (proposed), Waterworth Park and the existing Cooks River pathway.

Status

Members of the Wollie Creek Preservation Society, Friends of Ewen Park and The Mudcrabs developed and promoted a concept plan for the trail, secured funding and in-kind assistance, and orchestrated trail construction and development of a trail leaflet / map, promotional bookmark and events. DECC - NPWS installed wayfinding markers. The trail was officially launched, by Linda Burney, MP for Canterbury, and City of Canterbury Mayor Robert Furolo, with an inaugural walk on 1 June 2008.



WCPS President Peter Stevens welcomes NSW Governor Marie Bashir, there to launch the TVT photo exhibit at Campsie Library.

An exhibition of 70 photographs by 22 individuals to promote the trail and show off hidden treasures of the two valleys was held at four venues, provided by the City of Canterbury, Marrickville and Rockdale Councils, and launched by NSW Governor Marie Bashir. The Councils also helped promote the exhibition.

Teaching resources linked to the primary school curriculum are being developed with grant assistance from SMCMA to encourage use of the TVT for school excursions. The trail leaflet / map is available from www.wolliecreek.org.au.

Partners

- Wollie Creek Preservation Society
- Friends of Ewen Park
- The Mudcrabs

Funding

- Wollie Creek Preservation Society: in-kind
- Friends of Ewen Park: in-kind
- The Mudcrabs: in-kind
- SMCMA: \$13,500
- City of Canterbury: \$500 (exhibition mounting) plus in-kind
- Marrickville and Rockdale Councils: in-kind
- DECC – NPWS: in-kind (way markers)
- Mercure Hotel, Sydney Airport, SMCMA: leaflet printing sponsorship
- Planet Press (free printing of bookmark)

Useful Plants of the Cooks River Valley Poster

2007 - 2008 (Completed)

Project Description

There is considerable interest from the community about the traditional use of local native plants in the Cooks River Valley. This project developed a poster featuring knowledge of the D'harawal people, passed down through the family of Frances Bodkin, a Bitter Water woman of the D'harawal People and shared with Marrickville Council in 2007. The poster was developed in consultation with the Marrickville Aboriginal Consultative Committee.

Status

The completed poster is available from Marrickville Council. It was received with great enthusiasm by teachers attending its launch at the Marrickville Environment Network.

Partners

- Marrickville Community Nursery
- Marrickville Council
- Frances Bodkin
- Marrickville Aboriginal Consultative Committee

Funding

- Australian Government, Natural Heritage Trust, Envirofund: \$3,000
- Marrickville Community Nursery: \$1,500 in kind
- Marrickville Council: \$1,600

‘Walking Together, Working with Nature – An Environmental and Cultural Partnership along the Cooks River’ DVD

February 2008 - (July 2008)

Project Description

An 8-minute DVD was produced by the Sydney Metropolitan CMA, in partnership with staff from the City of Canterbury and community volunteers from the al-Ghazzali Centre for Islamic Sciences and Human Development in Roselands. The DVD promotes the benefits and contributions of bushcare and environmental volunteering by following a volunteer bushcare group from the al-Ghazzali Centre, during one of its monthly meetings on site. Interviews with team members and supervisors describe the project to restore native vegetation on the Cooks River bank at Rosedale Park, Croydon Park, and give practical tips on how to turn an existing community group into a bushcare group.

Status

The project is complete and the DVD will be launched at a special event at the al-Ghazzali Centre on 2nd July 2008. Copies of this valuable and inspiring tool for encouraging bushcare volunteering may be obtained from SMCMA.

Partners

- SMCMA (Project management)
- City of Canterbury
- Al-Ghazzali Centre for Islamic Sciences and Human Development, Roselands

Funding

- City of Canterbury: in-kind
- SMCMA, Ethnic Communities Support Project (2007/08): \$9,600 (\$4,600 cash; \$5,000 in-kind)
- Al-Ghazzali Centre: \$1,000 in-kind

Wolli Creek Bush Regeneration, Bray Avenue, Earlwood (Stage 3)

2006 - 2007

Project Description

The Wolli Creek Preservation Society (WCPS) has been doing bush regeneration at a site near the junction of Harthill-Law and Bray Avenues, Earlwood, since February 2003. The site is located within the proposed Wolli Creek Regional Park and was given high priority in the Regional Park Plan of Management, as it contains the last remaining off-stream wetland in the Wolli Valley.

Status

Weed removal has continued including the removal of large willows and privet. Weeding has also continued along the edge adjacent to the Harthill-Law Bridge. Designs were completed for the reconstruction of a stormwater outlet that is currently impacting on the wetland. Plantings completed in July 2005, have grown well and further plantings are underway using local provenance stock.

A CRFIP Round 4 grant was awarded for Stage 3 works, which included construction of a new stormwater outlet and walking track and continuing weed control. Work commenced on the stormwater outlet in April 2007 and is now complete. Weeding and planting of the area are continuing. Volunteer contributions on this project for the calendar years 2007 and 2008 were 530 hours.

Partners

- Wolli Creek Preservation Society
- City of Canterbury
- DECC - NPWS

Funding (Stage 3)

- WCPS: in-kind
- DOP, CRFIP (Round 4): \$38,976
- City of Canterbury: \$15,500 plus in-kind



Enthusiastic volunteers from the al-Ghazzali Centre hard at work to help revegetate the Cooks River Foreshores (Photo: <http://alghazzali.org/gallery.php?event=cooks-rvr>)

Other projects

Cooks River Pedestrian and Cycle Path Improvement Projects

Works completed, underway or planned during 2006/07 - 2007/08¹

Council	Location	Type of works	Status ²	Comments	Funding
Rockdale	<ul style="list-style-type: none"> ○ Along Muddy Creek, between Riverine Park, Arncliffe, and Bestic Street, Brighton. ○ Along Bestic Street. 	<ul style="list-style-type: none"> ○ Path surface restorations ○ Fencing ○ separate cycle-path construction along section on Bestic Street to address potential clash between pedestrians and cyclists ○ Other improvements 	C	<ul style="list-style-type: none"> ○ Works commenced and were completed in 2007. ○ Pathway upgraded: 500m between the Spring Street Channel, Riverine Park and Bestic Street, Brighton ○ New path constructed: 40m (to separate pedestrians from cyclists along the heavy road traffic using Bestic Street) 	<ul style="list-style-type: none"> ○ Rockdale Council: \$30,000 plus in-kind ○ DOP, Metropolitan Greenspace Program: \$30,000
Rockdale	Rockdale LGA	<ul style="list-style-type: none"> ○ Installation of new regional family of Cooks River Path signs 	P	Planned for 2008/09	
Marrickville	Kendrick Park	<ul style="list-style-type: none"> ○ Relocation of paths. ○ Route safety improvements thru existing car park and access road, including line-marking, signage and short path link 	P	Park master plan showing future location of paths adopted by Council in 2007. Work to be undertaken in stages over several years. Foreshore restoration works scheduled to commence 2009 will close existing path, so the cycleway will be realigned to go through the existing asphalt road/carpark.	<ul style="list-style-type: none"> ○ Marrickville Council: \$3,000
Marrickville	Mackey Park	<ul style="list-style-type: none"> ○ Shared path upgrade works 	C	New path laid: 3m width, 302m length	<ul style="list-style-type: none"> ○ Marrickville Council: \$95,000 (cash + in-kind)
		<ul style="list-style-type: none"> ○ Installation of new regional family of Cooks River Path signs 	P	Planned for 2008/09	<ul style="list-style-type: none"> ○ DOP, CRFIP: \$85,000
Marrickville	West of Mackey Park	<ul style="list-style-type: none"> ○ Pathway upgrade works 	C	New path laid 3m width, 70m length	<ul style="list-style-type: none"> ○ Marrickville Council: \$73,000
		<ul style="list-style-type: none"> ○ Installation of new regional family of Cooks River Path signs 	P	Planned for 2008/09	

¹ Works shown are based on or consistent with the *Cooks River Pedestrian and Cycle Path Improvement Study - Stage 5 Road Safety Audit and Pathway Development Strategy* (December 2006), prepared for the CRFWG.

² Status: C = completed; P = planned

Other projects

Council	Location	Type of works	Status ²	Comments	Funding
Marrickville	Westward from Mackey Park to Illawarra Road bridge	<ul style="list-style-type: none"> ○ Pathway upgrade works (in sections) 	P	Planned for 2009 and beyond, subject to progression of WaterPlay Park in Steel Park	<ul style="list-style-type: none"> ○ Marrickville Council: \$50,000 – 150,000 pa
Marrickville	All recently upgraded pathway sections: <ul style="list-style-type: none"> ○ Tempe Reserve (Holbeach Ave to Alexandra Canal pedestrian bridge) ○ Tempe Station car park ○ Mackey Park 	<ul style="list-style-type: none"> ○ Installation of centerlines and RTA path use signage 	P	Project deferred pending completion of Desalination pipeline project (paths are within works compound, some paths need reinstatement)	<ul style="list-style-type: none"> ○ As yet unfunded
Marrickville	Other pathway sections	<ul style="list-style-type: none"> ○ Installation of centerlines and RTA path use signage 	P	To be installed as each section is upgraded	
Canterbury	Brighton Ave to Lindsay Street Footbridge (Canterbury)	<ul style="list-style-type: none"> ○ Upgrade of the existing path including widening and improvement of surface. 	C	Completed June 2007 1,286 metres upgraded	<ul style="list-style-type: none"> ○ City of Canterbury: \$45,000 ○ DOP, CRFIP (Round 4): \$45,000
Canterbury	Lindsay Street Footbridge to Broughton St (Canterbury)	<ul style="list-style-type: none"> ○ Upgrade of the existing path including widening and improvement of surface 	P	Grant funding secured in December 2006. Works scheduled for implementation in 2008/09.	<ul style="list-style-type: none"> ○ City of Canterbury: \$70,000 ○ DOP, CRFIP (Round 4): \$70,000
Canterbury	Homer Street to Bankside Avenue, Undercliffe	<ul style="list-style-type: none"> ○ Foreshore path improvements from Bankside Avenue up to the steps at Homer Street 	C	Completed in 2006/07 760 metres upgraded	<ul style="list-style-type: none"> ○ City of Canterbury: \$135,000 plus in-kind (in-house design work) ○ DOP, CRFIP (Round 2): \$35,000 (bank stabilisation works will be separately funded)
	Access to foreshore path (downstream) from Homer Street	<ul style="list-style-type: none"> ○ Replacement of existing steps with ramp or ramp/step arrangement to improve bicycle access between foreshore path and Homer Street 	P	Design work has commenced. Construction to be done in conjunction with bank stabilisation works.	
Canterbury	Various	<ul style="list-style-type: none"> ○ Other improvement works recommended in the Cooks River Pathway Development Strategy 	P	Works have been scheduled into Council's rolling works program.	
Burwood	Sections of the Cooks River Path within Burwood LGA	<ul style="list-style-type: none"> ○ Pedestrian Safety Improvement Study to develop recommendations for improving paths and on-road traffic facilities for path users 	C	2004 - 2007	<ul style="list-style-type: none"> ○ Burwood Council: \$30,000 (cash and in-kind) ○ DOP, CRFIP (Round 1): \$30,000

Other projects

Council	Location	Type of works	Status ²	Comments	Funding
Burwood	Flockhart Park To Walsh Ave Reserve	<ul style="list-style-type: none"> Proposed additional solar lighting to complete lighting along Burwood's section of the cycle path 	P	Grant funding sought from Metropolitan Greenspace Program 2008	<ul style="list-style-type: none"> \$ for \$, Burwood Council and Metropolitan Greenspace Program (pending approval of grant)
Burwood	Lees Ave to Parramatta Rd	<ul style="list-style-type: none"> Proposed cycle way north-south link through Burwood, linking Cooks River to Parramatta Rd 	P	RTA bicycle facilities grant funding approved	<ul style="list-style-type: none"> \$ for \$, Burwood Council and RTA
Burwood	Walsh Ave Reserve	<ul style="list-style-type: none"> New play equipment recently installed in Wash Avenue Reserve 	C	Completed early 2008	<ul style="list-style-type: none"> \$ for \$, Burwood Council and NSW Sport and Recreation Capital Assistance Grant
Burwood	Walsh Ave Reserve	<ul style="list-style-type: none"> Proposed 2 new picnic shelters in Walsh Avenue Reserve 	P	Proposed for 2009. Will apply for funding November 2008	<ul style="list-style-type: none"> \$ for \$ Burwood Council & 2008/09 NSW Sport and Recreation Capital Assistance Grant (pending approval of grant)
Strathfield	Maria Street and Southend Tennis Centre car park	<ul style="list-style-type: none"> Path safety upgrade, including relocation of Maria St crossing and construction of a new pathway beside (rather than through) the Southend Tennis Centre car park 	C	Completed 2006/07. 186 metres of new cycleway from Ford Park to Maria Street, including past Southend Tennis Centre. Works were as per detail design D6 of the Cooks River Pedestrian & Cycle Path - Pathway Development Strategy.	<ul style="list-style-type: none"> Strathfield Council

CRFWG members

PARTICIPATING ORGANISATIONS & THEIR REPRESENTATIVES

Core Members

Councils contributing financially and participating actively, including attending meetings

Ashfield Council	*Janene Harris, Environmental Officer - CRFWG Chair 2007 & 2008
Bankstown City Council	*Rebecca Piper, Environmental Projects Officer Kathy Godfrey, Biodiversity Officer Nerida Williams, Catchment Management Officer Deana Filipas, Catchment Management Officer
City of Canterbury	*Nell Graham, Team Leader Environmental Issues David Bell, Team Leader Environmental Issues Louise Rhodes, Environmental Policy Officer
City of Sydney	*Cara Peterie, Senior Environmental Development Officer Kathryn Cassidy, Environmental Development Officer Kate Black, Environmental Development Office Peter Donley, Manager Transport and Support
Marrickville Council	*Jan Orton, Manager Environmental Services *Anumitra Chand, A/ Sustainability Project Coordinator Angela Maier, Sustainability Project Coordinator Ros Gibbons, Biodiversity Projects Co-ordinator Leigh Trevitt, Landscape Coordinator Erin Sellers, Environmental Coordinator
Rockdale City Council	*Kristy Gooding, Environmental Strategist Colin Mable, Executive Engineer Paula Kennedy, Landscape Architect
Strathfield Municipal Council	*Jon Stiebel, Sustainability Programs Co-ordinator *Jean Muspratt, Environmental Projects Officer Brendan Grimson, Sustainability Programs Officer

Participating Members

Other councils and organizations participating actively and attending meetings

Kogarah Council	*David Towns, Catchment Management Officer Gina Spyraakis, Catchment Management Officer
NSW Department of Environment and Climate Change	*Arthur Michos, Senior Natural Resource Officer, Coasts & Estuaries *Ben Khan, Ranger - Harbour South Area, Parks and Wildlife Group Peter Evans, Team Leader, Major Projects - Coasts and Estuaries
NSW Department of Planning	*Christina Timmins, Greenspace Grants Project Officer Mark Taylor, Open Space Program Coordinator Tom Sear, Grants Program Officer Belinda Rollason, Greenspace Programs Coordinator
Sydney Metropolitan Catchment Management Authority	*Phillip Birtles, Project Officer Judy Christie, Regional Natural Resource Management Facilitator Leanne Hanvey, Regional NRM Facilitator (Water) Owen Graham, Place Manager, Botany Bay and Catchment
Sydney Water Corporation	*Daniel Cunningham, Natural Assets Manager Stormwater Susan Farr, Manager Stormwater Kristina Simic, Project Manager Stormwater Helena Orel, Senior Officer, Community and Stakeholder Relations Celia Busteed, Streamwatch Project Officer Mylissa Kylian, Streamwatch Project Officer
RailCorp	*Peter Semple, Senior Natural Resources Officer

* indicates principal active representative(s) as of 30 June 2008.

CRFWG Members

Corresponding Members

Other organizations providing technical support, information and advice as needed

Darug Tribal Aboriginal Corporation	*Leanne King, Chairperson
Georges Riverkeeper Program, Georges River Combined Councils Committee	*Simon Annabel, Georges Riverkeeper *Ali Hanlon, Executive Officer Jacqui Paine, GRCCC Project Coordinator
Hurstville Council	Cindy Cunningham, Environmental Sustainability Coordinator
NSW Department of Environment and Climate Change	*Kieran Horkan, Principal Officer Sydney Catchments *Ray Fowke, Conservation Planning Officer, NPWS
NSW Department of Primary Industries	*Drew Egan, Fisheries Officer
NSW Maritime	*Graeme Dunlavye, Operations Manager, Botany Bay Port Hacking
Total Environment Centre	*Leigh Martin, Urban Campaigner

* indicates principal active representative(s) as of 30 June 2008.

PROJECT INDEX (with issues addressed & location)

Location	Project Name	Status	Issues addressed										Pg No	
			New/Completed/Ongoing	Access, recreation & use	Natural conservation & restoration (Biodiversity)	Water quality / pollution	Riverbank rehab & restoration	Landscape character & cultural heritage	Interpretation & promotion	Strategic and other planning	Integrated water management	Community initiative / involvement		Research
Rg	Botany Bay Coastal Catchments Initiative	NO				*					*	*	*	25
Rg	Community Attitudes towards Urban Biodiversity along Cooks River	NC			*			*	*	*	*	*	*	19
Rg	Cooks River Bank Naturalisation & Flood Study (Sydney Water)	NO			*	*	*	*	*	*	*	*	*	24
Rg	Cooks River Community Update	NC							*	*	*	*	*	26
Rg	Cooks River Enviro Workers (CREW)	O				*					*	*	*	16
Rg	Cooks River Foreshores Landscape & Access Guidelines	C	*					*	*	*	*	*	*	26
Rg	Cooks River Integrated Interpretation Strategy	C	*					*	*	*	*	*	*	20
Rg	Cooks River Path Signage Strategy	O	*						*	*	*	*	*	22
Rg	Cooks River Pedestrian & Cycle Path Improvement Study	C	*						*	*	*	*	*	23
Rg	Cooks River Sustainability Initiative	NO			*	*			*	*	*	*	*	15
Rg	Development of a Cooks River Open Space Plan	C	*						*	*	*	*	*	26
Rg	Development of a Cooks River Estuarine Vegetation Management Plan	NO	*	*			*	*	*	*	*	*	*	17
Rg	Implementation of Cooks River Path Signage Strategy	O	*						*	*	*	*	*	22
Rg	Lower Cooks River Catchment Bus Tour	NC							*	*	*	*	*	23
Rg	Planting the Seed	O		*					*	*	*	*	*	19
Rg	RiverLife Interpretive Tour Program	O	*					*	*	*	*	*	*	21
Rg	RiverScience Cooks River Ecological Monitoring Program	O		*	*				*	*	*	*	*	18
Rg	Riverworks Cooks River Environmental Sculpture Competition	NC	*						*	*	*	*	*	37
C	Bank Restoration, Gough Whitlam Park	O		*	*	*	*	*	*	*	*	*	*	27
C	Bush Regeneration, Campsie Bushland	O		*							*	*	*	28
C	Bush Regeneration, Wollie Creek Regional Park, Johnston Street, Earlwood	NO	*	*	*	*	*	*	*	*	*	*	*	29
C	Nanny Goat Hill Bush Regeneration	O		*							*	*	*	36
C	Richard Ave Stormwater Management, Wollie Creek	NC				*					*	*	*	36
C	Turella Reserve Weed Control & Revegetation	NO		*							*	*	*	38
C	"Walking Together, Working with Nature" DVD	NC		*					*	*	*	*	*	41
C	Wollie Creek Bush Regeneration, Bray Av, Earlwood (Stage 3)	NC		*							*	*	*	41
C, M	Cooks River Eco-Volunteers (The Mudcrabs)	O		*	*	*					*	*	*	30
C, M	Steel Sheet Piling Removal & Remediation	O		*	*	*	*				*	*	*	37
C, R	Ludwigia & Alligator Weed Control, Wollie Creek	O		*	*	*					*	*	*	35
C, R	Turella Weir Fishway	NO		*	*	*					*	*	*	39
C, R	Two Valley Trail	NO	*						*	*	*	*	*	40
M	Alexandra Canal Path Concept Design Study	NO	*						*	*	*	*	*	27
M	Cooks River Arts & Sustainability Festival	O	*						*	*	*	*	*	29
M	Cooks River Valley Garden	O		*	*	*	*	*	*	*	*	*	*	31
M	Cooks River Vegetation Regeneration	NO		*	*	*	*	*	*	*	*	*	*	32
M	Marrickville Fauna Study	NC		*	*	*	*	*	*	*	*	*	*	35
M	Kendrick Park Foreshores Project	O	*	*	*	*	*	*	*	*	*	*	*	34
M	Tempe Reserve Picnic Grounds & Planting Master Plan	O	*	*	*	*	*	*	*	*	*	*	*	38
M	Useful Plants of the Cooks River Valley Poster	NC		*	*	*	*	*	*	*	*	*	*	40
R	Bardwell Creek Stormwater Management Works	NC				*					*	*	*	28
R	Bardwell Valley Plan of Management	NO	*	*	*	*	*	*	*	*	*	*	*	28
R	Cahill Park Plan of Management	NO	*	*	*	*	*	*	*	*	*	*	*	29
R	Cooks River Water Quality Monitoring Study	NC				*					*	*	*	32
R	Kyeemagh Boat Ramp Improvements	NC	*	*	*	*	*	*	*	*	*	*	*	34
R	Kyeemagh Boat Ramp Reserve Foreshore Improvement	NO	*	*	*	*	*	*	*	*	*	*	*	34
RCMBS	Pedestrian & cycle path improvement projects	NCO	*	*	*	*	*	*	*	*	*	*	*	42
S	Cooks River Restoration, Freshwater Park - Revegetation and Maintenance Project	C		*	*	*	*	*	*	*	*	*	*	30
S	Cooks River Restoration, Freshwater Park (Stage 3, Area B)	C		*	*	*	*	*	*	*	*	*	*	31
S	Dean Reserve Pit Stop - Stage 4 Upgrade	NO	*	*	*	*	*	*	*	*	*	*	*	33
S	Dean Reserve Stage 3 Upgrade, Strathfield	NC	*	*	*	*	*	*	*	*	*	*	*	33
S	Improving Biodiversity in Streetscapes	NO		*	*	*	*	*	*	*	*	*	*	33
All	Sydney Water Stormwater Quality Improvement Devices	NO				*					*	*	*	38



COOKS RIVER
FORESHORES
Working Group

c/ Strathfield Municipal Council, PO Box 120, Strathfield NSW 2135

TEL 9748 9973 FAX 9748 9914

judy.pincus@strathfield.nsw.gov.au